



Deerland Carry

NFCT Waterway Work Trip

July 15-17

Introduction:

This year we will kick off our Waterway Work Trip schedule at the Deerland Carry. This project is very important because the carry gets a large degree of use. We will be focusing our work at the put-in. It is here that we will be constructing a 7-8 step stone staircase. We will also be finishing work along the trail, completing a stretch of bog bridging that was begun during our 2010 season and replacing rotting boards along the number of bog bridges that can be found along this trail.

Along with NY DEC support, we will be partnering with the Raquette River Corridor Project to accomplish work associated with this project.

Driving Directions and Meeting Location:

From the town of Long Lake, NY follow Route 28N and 30 southwest towards Blue Mountain Lake for approximately 3 miles. The road will take a sharp turn towards the south, at this bend take a right on North Point Road for approximately 2 miles to the Deerland parking area. The parking area will be on your right with a trail leaving from it and heading downhill. Park and follow the trail to the Raquette River. There are a couple of lean-tos that we will be using as our base camp. The NFCT Stewardship Interns will be here to greet you.

Follow this link for a [Google Map of the project](#).

Camping and Facilities:

This site contains two lean-tos and room for tents. We will establish a kitchen area. We will also have the opportunity to have camp fires. It is recommended that you bring camping gear with you. If you have any camping gear needs please contact NFCT Trail Director, Walter Opuszynski at walter@northernforestcanoetrail.org or by dialing (802)496-2285 x2, we may have what you need for use.

There will be a primitive outhouse available for use. We will provide anti-bacterial gel and toilet paper, please bring all other sanitary items you may need.

Food:

The cost of this WWT goes towards purchasing food for the NFCT interns and volunteers. NFCT interns will prepare meals. Meals will range from dutch oven pizza to chocolate chip pancakes and everything in between. We will have ample drinking water available as well as a variety of powdered drink mixes. We will also have tea and coffee available.

What to Bring:

- Personal camping gear (include rain gear, a tent, eating utensils, flashlight, etc.)
- Work Gloves
- Water Bottle
- Paddling Gear (If you are interested in paddling opportunities)

Tools will be provided, although extra shovels, buckets, or mattocks could be helpful. Food will be provided by the NFCT (Please notify us of any food preferences/allergies)

Paddling:

There will be group paddling opportunities weaved into the WWT, as well as time for solo pursuits at the end of the day. These will not be guided tours as our NFCT Interns are not trained or certified guides although they will have Wilderness First Aid Certification and open/fast water paddle skills and rescue training. We will decide as a group the nature of the group paddling opportunities. With the variety of water types near Deerland Carry we can work as a group to create different paddles to meet people's abilities and comfort level. If you have any paddling needs or questions please contact NFCT Trail Director, Walter: walter@northernforestcanoetrail.org (802)496-2285 x2

WWT Project Details:

The NFCT has worked on the Buttermilk Falls and Deerland Carries for the past 2 seasons. It has been our goal to make these carries more appealing than the road alternative to increase the degree of safety.

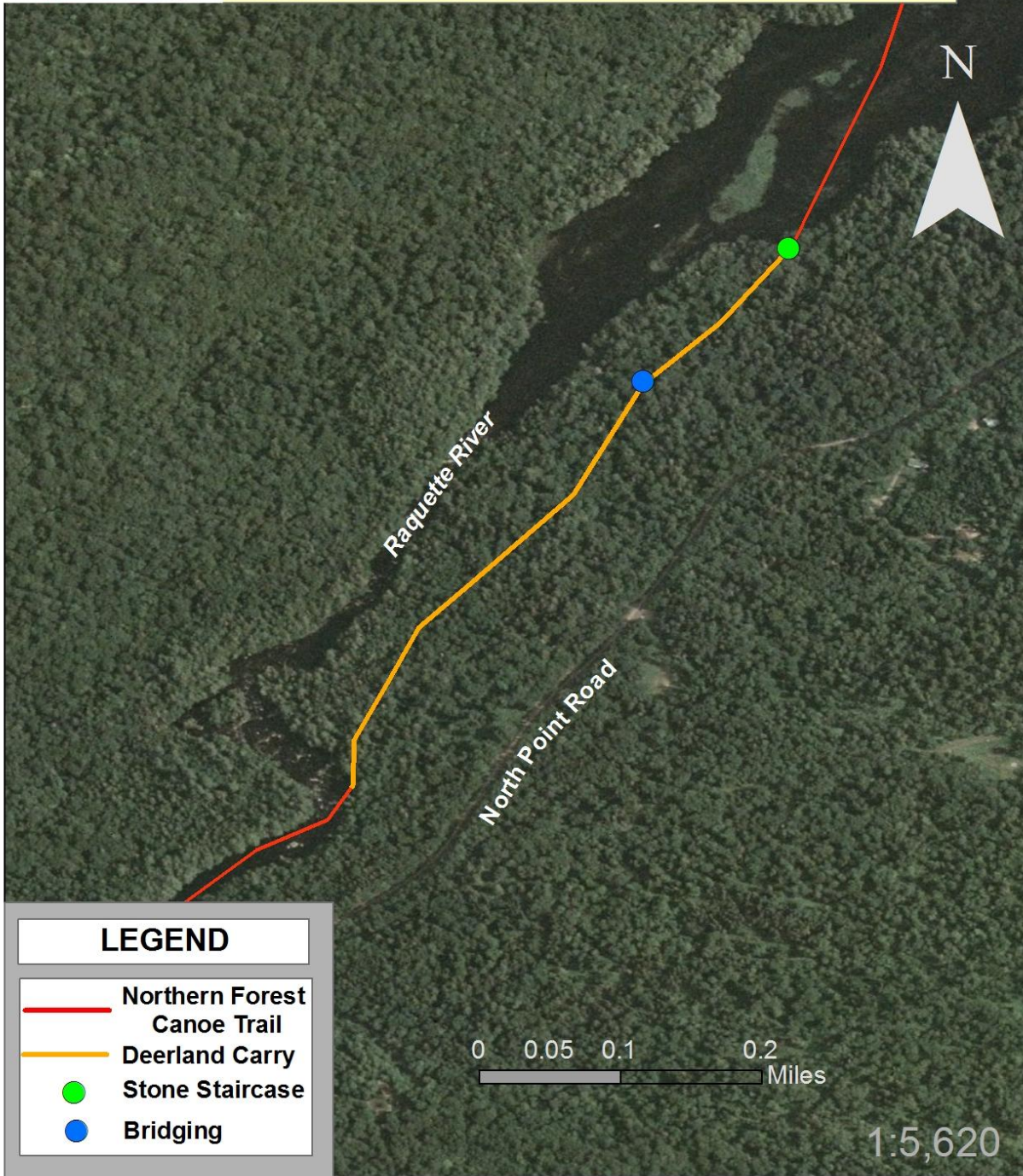


*2010 Buttermilk
Falls/Deerland Carry
NFCT Waterway Work
Trip Group Photo.*

Project Map



Deerland Carry Proposed 2011 Project



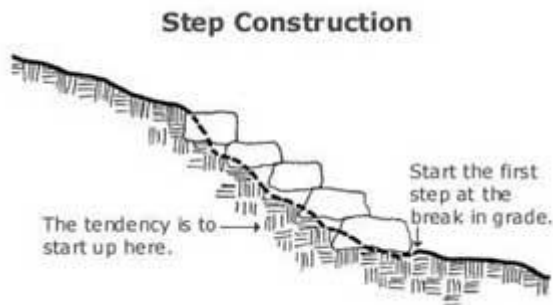
Project Description

● Stone Staircase

The Deerland Carry Put-in is in need of stone staircase installation for the following reasons:

- The slope of the grade is approximately 35%.
- The soils comprising the tread surface are loose, a mix of sand and clay
- The fluctuation of the Raquette River has continually eroded the put-in as well as depositing fine sediment which is prone to erosion and instability
- The put-in site is the focal point for up-slope run-off

The installation of a stone staircase will create a firm and stable tread surface. It will also act as a stream-bank soil retainer reducing the potential for erosion to occur. A stone staircase will stay in place during high-water and will require little maintenance, unlike a log ladder.



Graphic created by the US Forest Service

Current Site Pictures



Down-slope view of Deerland Put-in



Up-slope view of Deerland Put-in



This stone staircase was installed at Franklin Falls during the 2009 and 2010 NFCT Stewardship Intern field season. Construction was performed by the NFCT stewardship intern crew and volunteer participating in a Waterway Work Trip.

● **Bog Bridging**

In 2010 the NFCT constructed a 25' section of double stringer, decked bog bridging over a muddy spot on the Deerland Carry. Due to time constraints the 5' long angled approach ramps were not constructed. These ramps would extend the bog bridging beyond the muddy spot ensuring that the muddy area would not spread in the future and would also help people portaging make the transition to and from the bridging. If time permits, the Stewardship Crew will assess other bog bridging along the carry and replace any loose or rotten boards.

Materials Needed:

- Four 6" x 6" x 8' pressure treated or rough cut cedar or hemlock timbers
- Five 2" x 8" x 12' pressure treated or rough cut cedar or hemlock planking
- Eighty 40d (5 inch) nails



Bog bridging constructed by the NFCT Stewardship Crew in 2010.

The access ramps will be added to both sides of the recently installed bridging. The ramps will rest in placed crush rock to keep the wood raised and dry allowing for a longer life span.

Deerland Carry Waterway Work Trip Schedule

Friday July 15, 2011

5 PM- For those able to arrive at 5:00, the Stewardship Interns will provide a tour of the project site

6 PM- Dinner will be prepared around 6:00. Please inform us if you are planning on attending Friday's dinner so that we are adequately prepared. Also, make us aware of any food requirements you may have.

7 PM- Feel free to take advantage of all the local paddling opportunities!

Saturday July 16, 2011

8AM-9AM Breakfast

9AM-12PM Worksite Projects

12PM-1PM Lunch

1PM-3PM Worksite Projects

3PM-6PM Group Paddle

6PM-7PM Dinner

7PM- Evening paddle

Sunday July 17, 2011

8AM-9AM Breakfast

9AM-12PM Worksite Projects

12PM-1PM Lunch

1PM-2PM Wrap-up

****Schedule and project descriptions may change. You will be notified as we get closer to the WWT if this happens****

Please fill out and return all Waterway Work Trip Forms at your earliest convenience. Forms will be distributed once you are officially enrolled in the WWT.