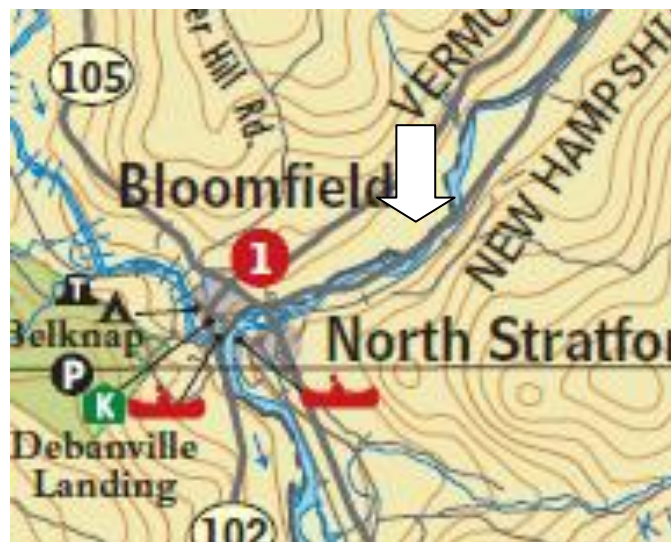
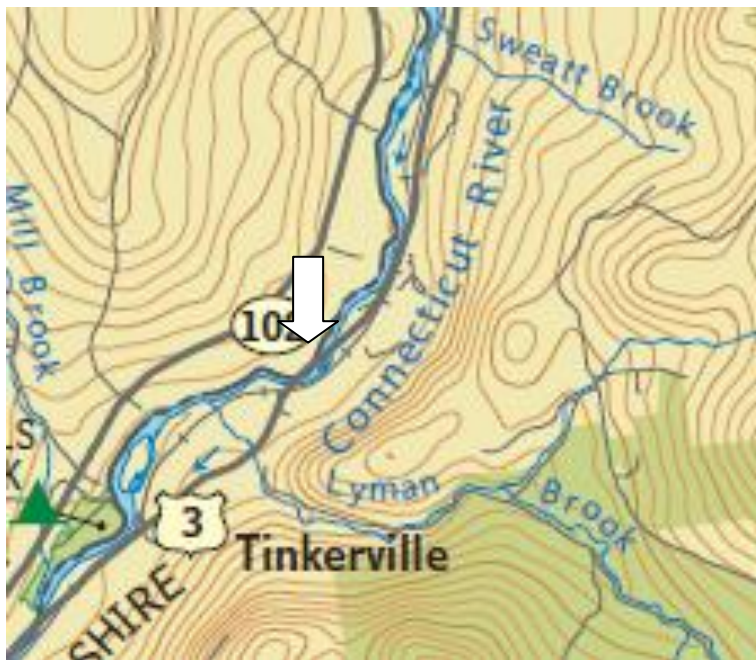
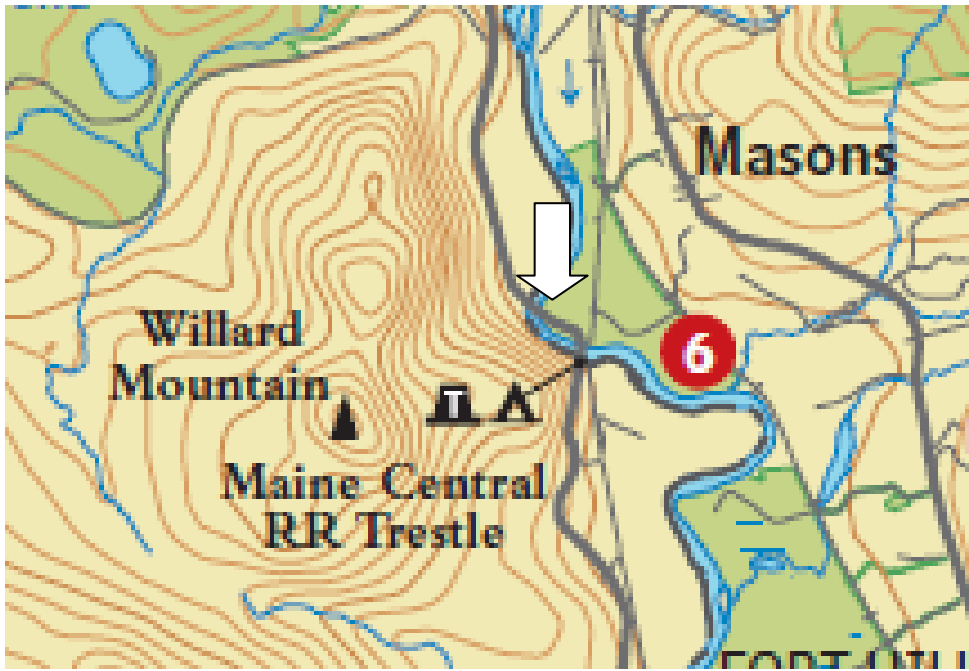


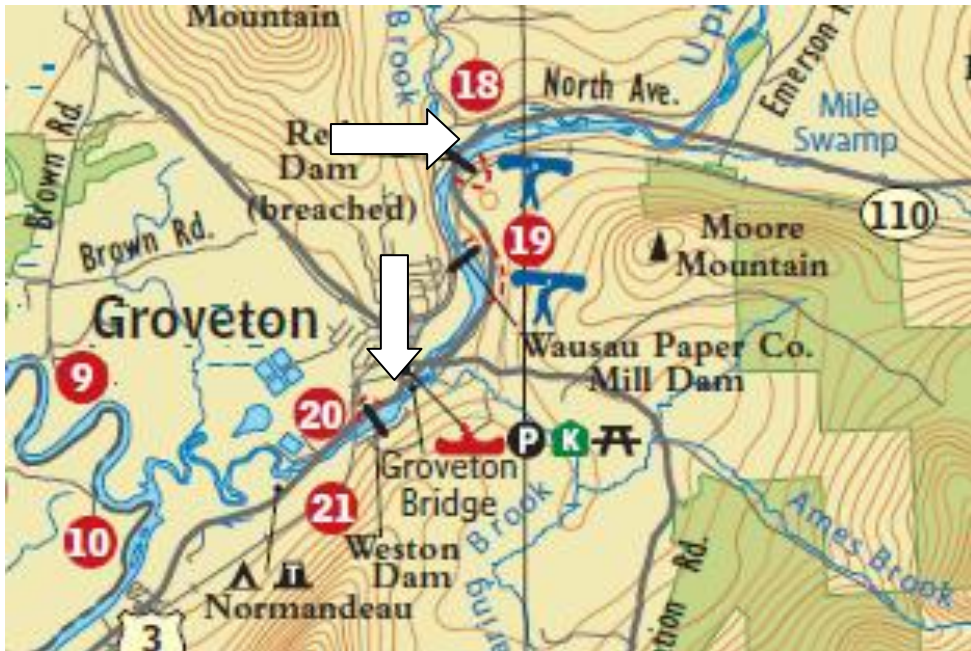
NFCT Map 7 Road Layer Errors that can impact navigation

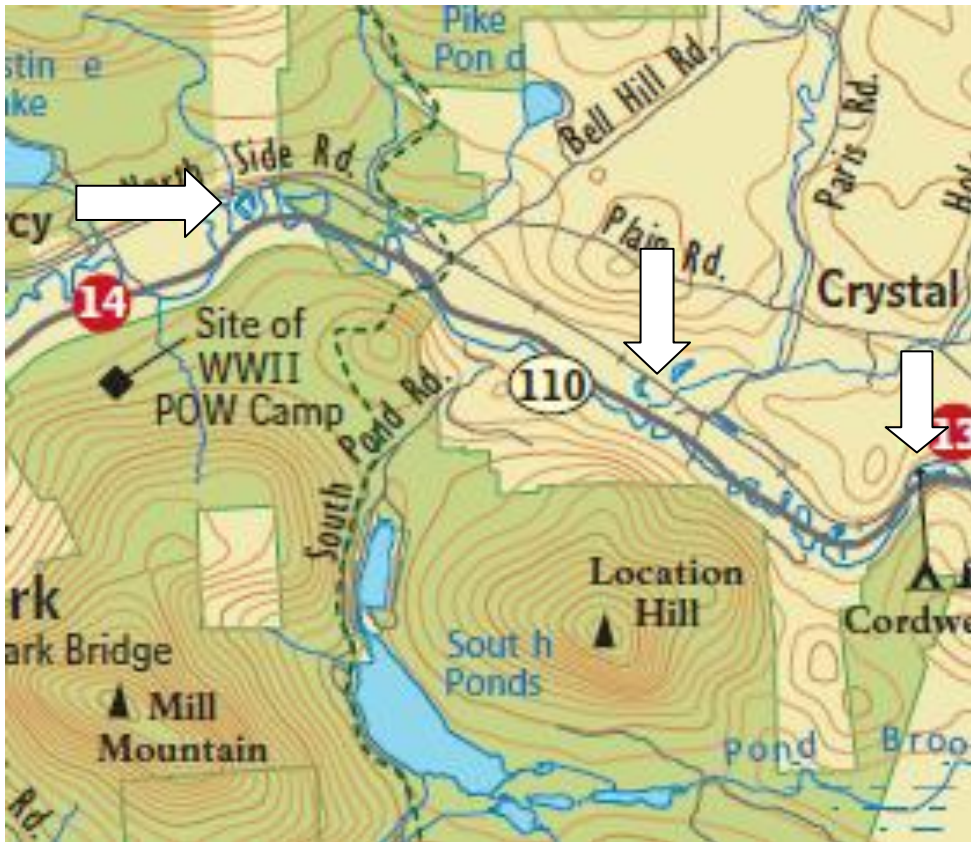
The latest version of Map 7 (2010) has a roads data layer error that occurred just before printing. We are working with the publishers to develop an appropriate solution but in the meantime we ask that you make note of the following edits:

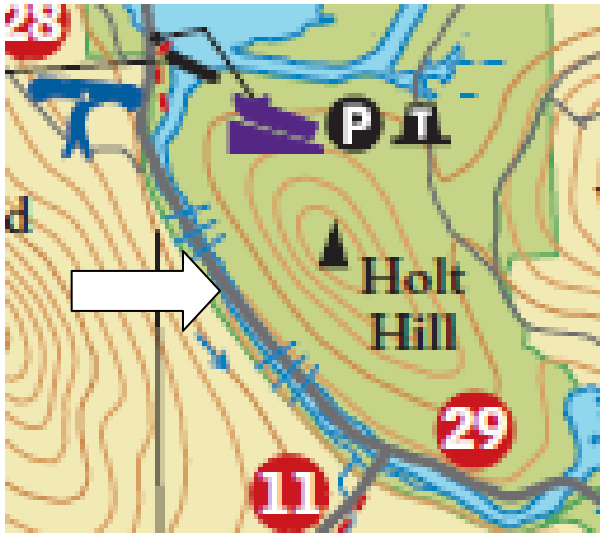
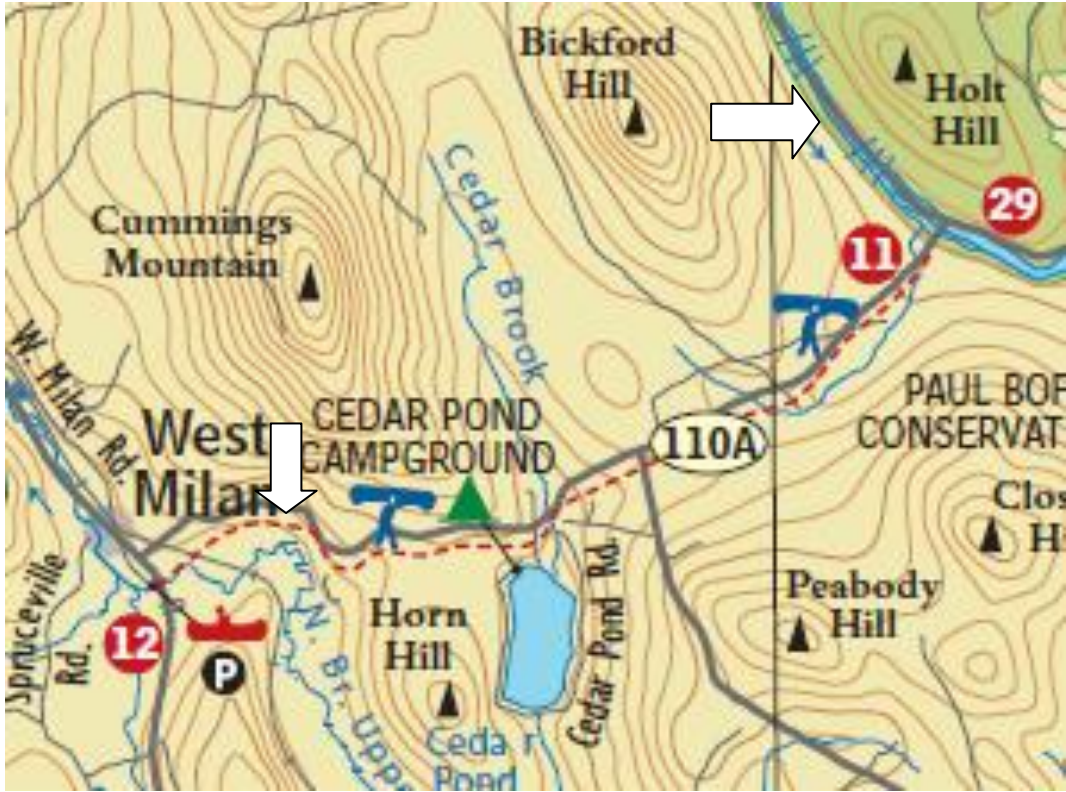
White arrows point to locations where the shift in the major roads data layer makes it appear as though there is a bridge or river crossing.

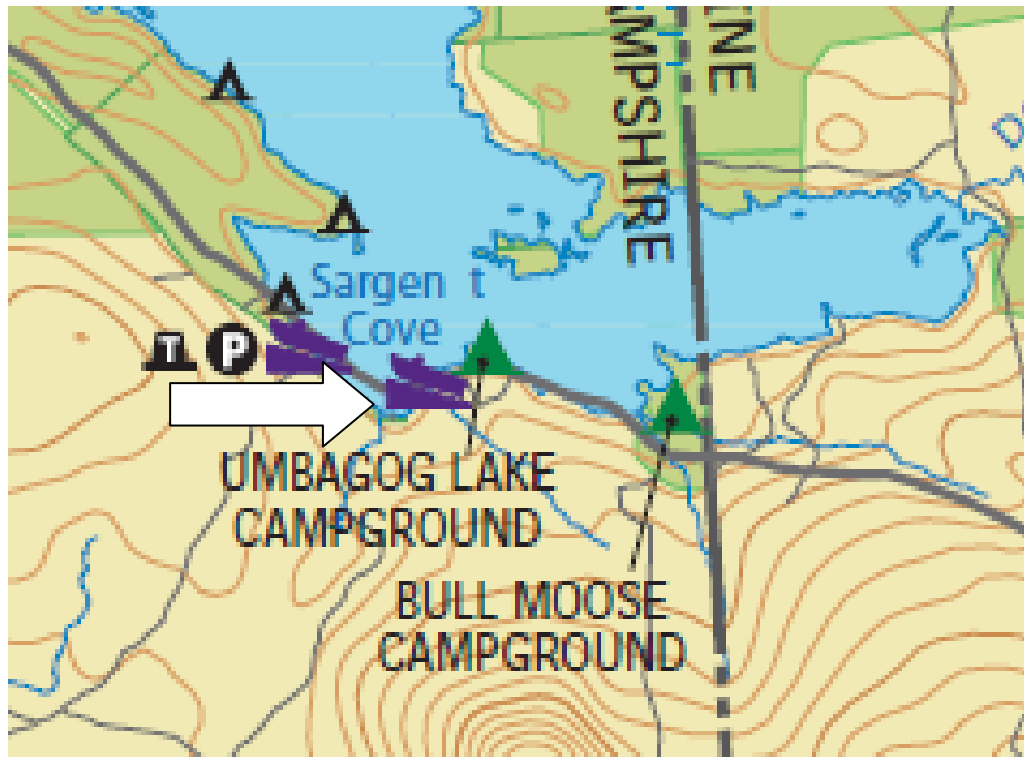
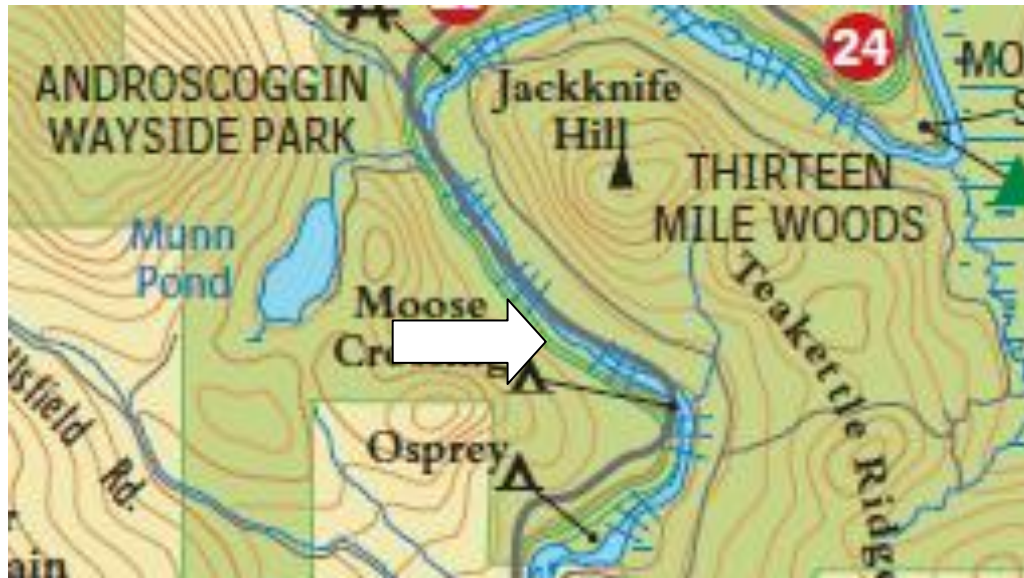


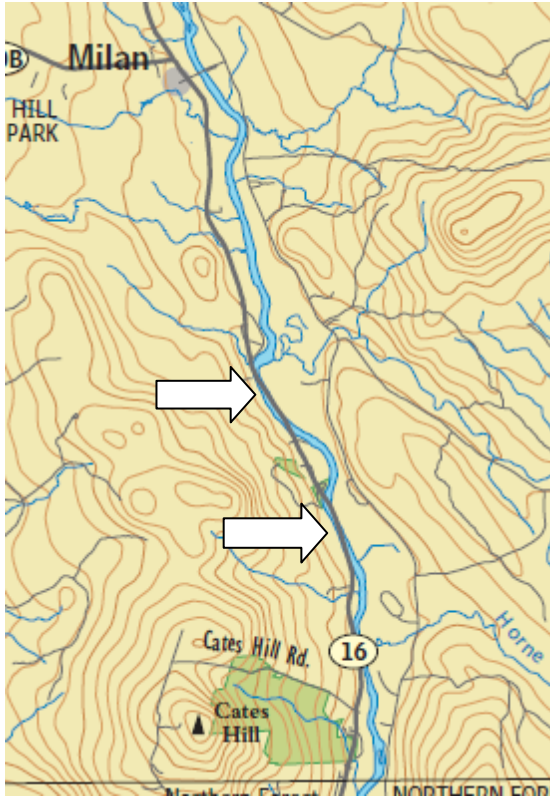












Before printing, the primary roads data layer shifted 1/8 mile to the north creating locations on the map where it appears that the road crosses the Nulhegan, Connecticut, Upper Ammonoosuc, and Androscoggin Rivers.

Actual river crossings occur in the following locations (listed from west to east):

Nulhegan River

- At the Confluence of the Connecticut River in Bloomfield, VT (Route 102)

Connecticut River

- Bloomfield, VT (Route 105)
- Bloomfield, VT (Rail road trestle)
- Maidstone, VT (Maidstone Bridge Road)

Upper Ammonoosuc

- Groveton (Rail road trestle-Southeast of town)
- Groveton (Route 3)
- Groveton (Rail road trestle-Northeast of town)

- Emerson Road (3.3 River miles upstream of Groveton)
- Rail road trestle (1 river mile downstream of Stark)
- Bell Hill Road Bridge (5 river miles downstream of West Milan)
- Paris Road Bridge (3.5 river miles downstream of West Milan)
- Hart Road Bridge (1.4 river miles downstream of West Milan)
- Route 110 Bridge (.3 river miles downstream of West Milan access point)

Androscoggin River

- Seven Islands Bridge (8 river miles downstream of Errol)
- Errol (Route 26 Bridge)