



# NFCT Trail Update

---

**Map:** 5

**Date of Update:** 3-3-2015

**Location:** Canoe & Co. Campsite

**Waterbody:** Missisquoi River

**Town:** Glen Sutton

**Lat/Long:** 45° 02' 29.12" N, 72° 30' 06.85" W

**Elevation:** 508 feet

**Overview:** The owners of Canoe & Co. in Glenn Sutton, Quebec are very supportive of the NFCT. Frank Turcotte allows people to camp on his property as needed.

**Site Information:** On river left you will see a small stone ramp leading up to a field. Canoe & Co base of operations is just upstream in a white house with stilts in the front. Camping is allowed in the field and there is an outhouse (complete with plumbing) available for use. If you are not interested in portaging the Grand Portage Canoe & Co offers shuttles. Tell Frank and Rochelle we say "Hi!"

Canoe & Co Contact Info:

1121 Chemin Burnette

Glen Sutton, QC G0E 2K0

450-538-4052

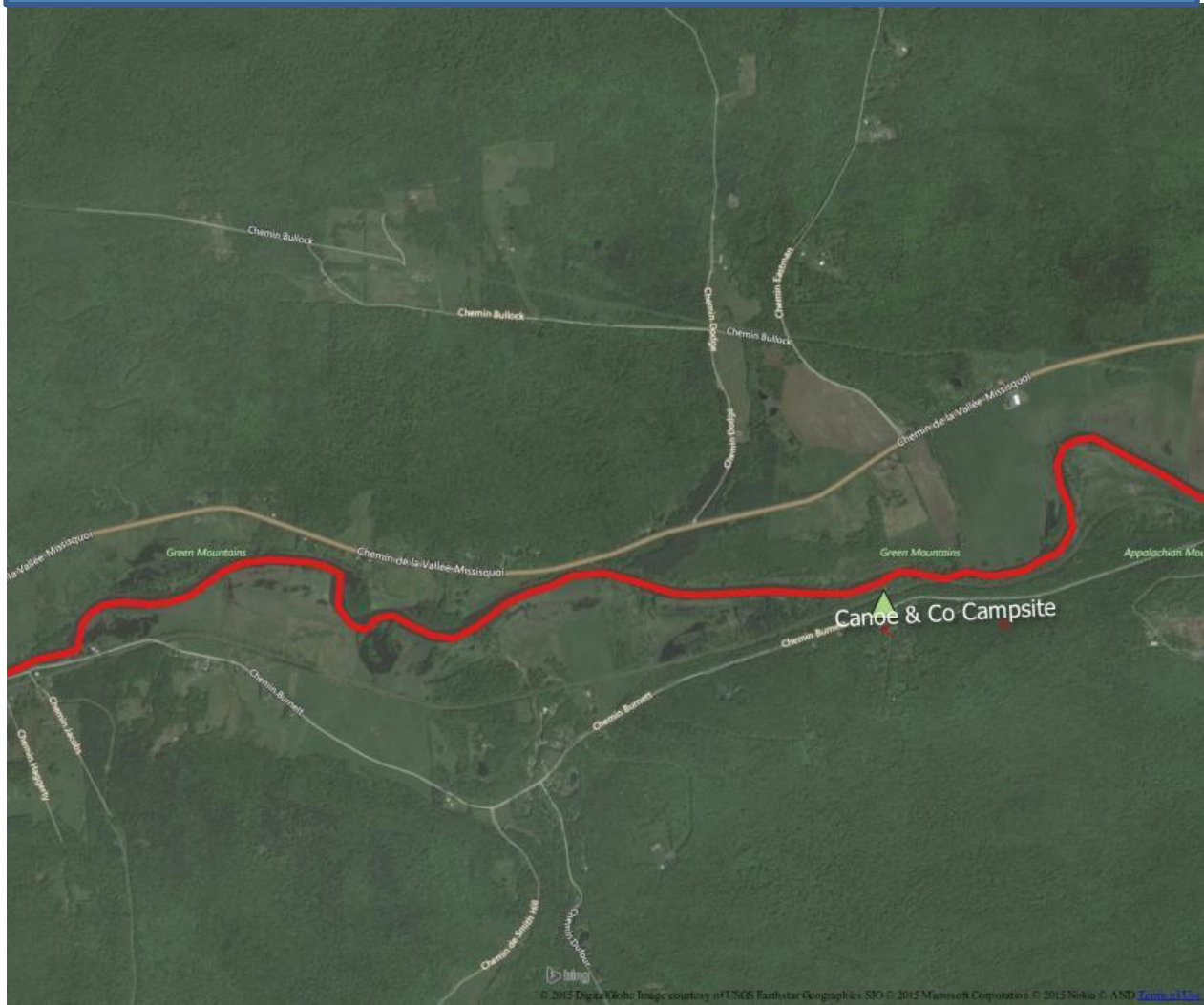
[frank-turcotte@hotmail.com](mailto:frank-turcotte@hotmail.com)

<http://www.canoecosutton.com/contact-u>

## Close-up View of NFCT Map 6



## Satellite Imagery of Canoe & Co Campsite Location



*The NFCT works to maintain landowner agreements and maintain the access, portage, and campsites along the 740-mile trail corridor. Please [become a member](#) or give to the [Trail Fund](#) to keep the Trail alive.*