



NFCT Trail Update

Map: 4

Date of Update: 5-15-2008

Location: East Highgate Dam Remains

Waterbody: Missisquoi River

Town: East Highgate, VT

Lat/Long: 44° 55' 40.32"N, 72° 59' 13.24" W

Elevation: 197 ft

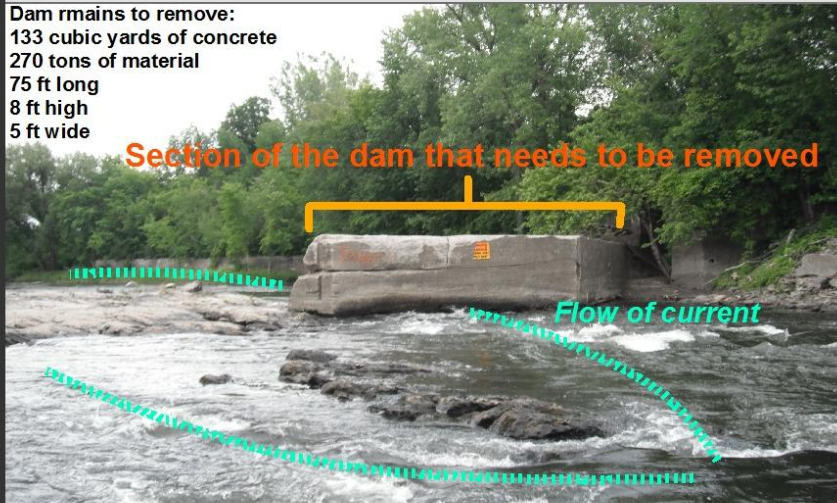
Overview: The remains of the breached East Highgate Dam Remains are undercut and very dangerous. Stay away from the wall which extends into the river from the river-right (north) bank. We are working with landowners and the State of Vermont to hopefully remove this structure. Until it is removed, portage or carefully scout your route before running this stretch. There is a warning sign installed 1,000' upstream of the portage and another warning sign on the dam remains. High waters and ice-out can remove the signs, so do not count on them to forewarn the dam remains locations. There is a steel truss bridge (Machia Road) just upstream of the dam remains location. If scouting the location from the bridge, be careful, the roadway is extremely narrow.

Site Information: Take out to portage or scout on river right at the top of the first rapids, above the truss bridge. Scout the river and the hazard from the bridge. To portage, walk through East Highgate on Route 78; use caution on this busy road. After passing all the houses, access the river via a short path from the road. You can see the layout of the portage using this map. In May, 2008, warning signs were installed on both banks of the river upstream and marking the take out and temporary portage through town. Please respect the landowners who have provided this portage and tread lightly on their property.

East Highgate Dam Remains Removal Project

Priority Project - Public Safety Issue

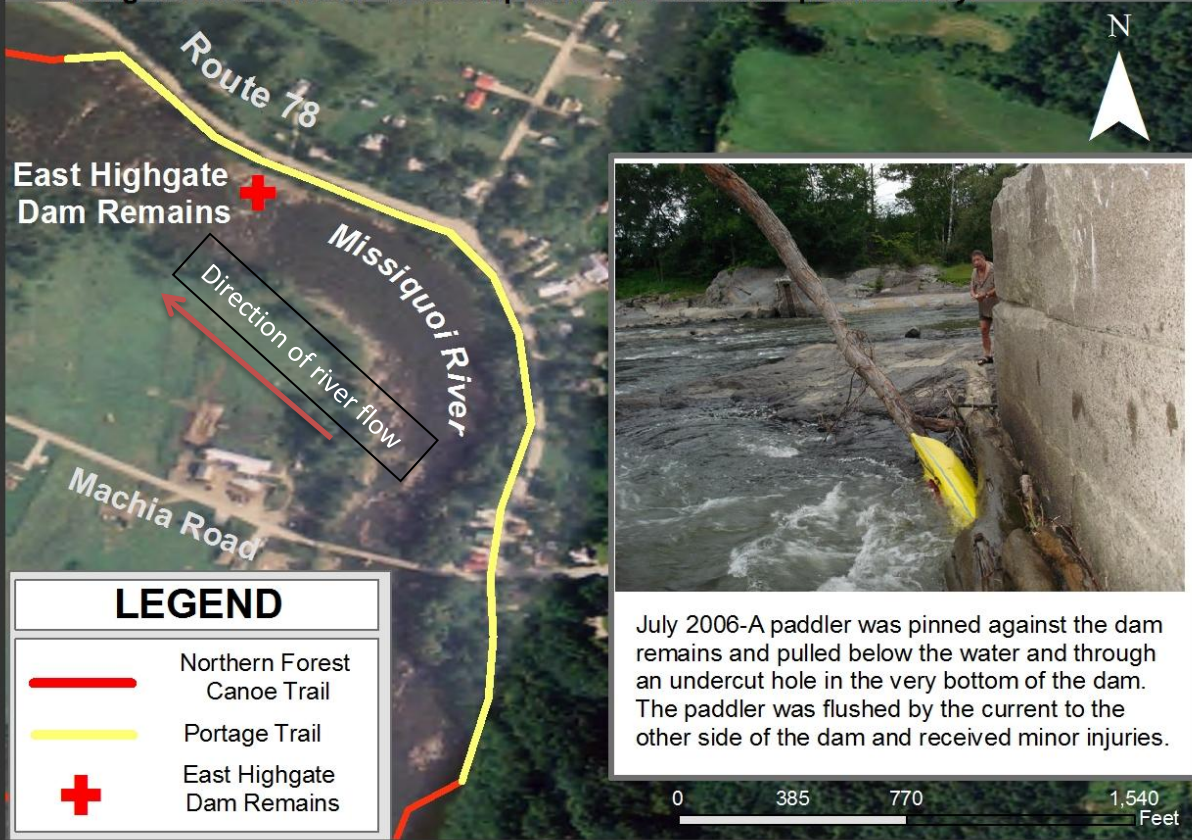
Dam remains to remove:
 133 cubic yards of concrete
 270 tons of material
 75 ft long
 8 ft high
 5 ft wide



Since 1999 there have been 3 recorded instances of paddlers being pinned against the dam remains. In one occurrence a paddler was pulled through a hole in the dam below the water, another occurrence involved a school group. The NFCT has worked with partners to develop warning signs and install a portage. Completely removing this section of dam will assure public safety.

Estimated Cost of Removal:
\$60,000

The Village of Swanton owns the dam remains and up to 8 acres of associated land. The Northern Forest Canoe Trail would like to work with the Village to secure funding for dam removal or develop a method to assure public safety.

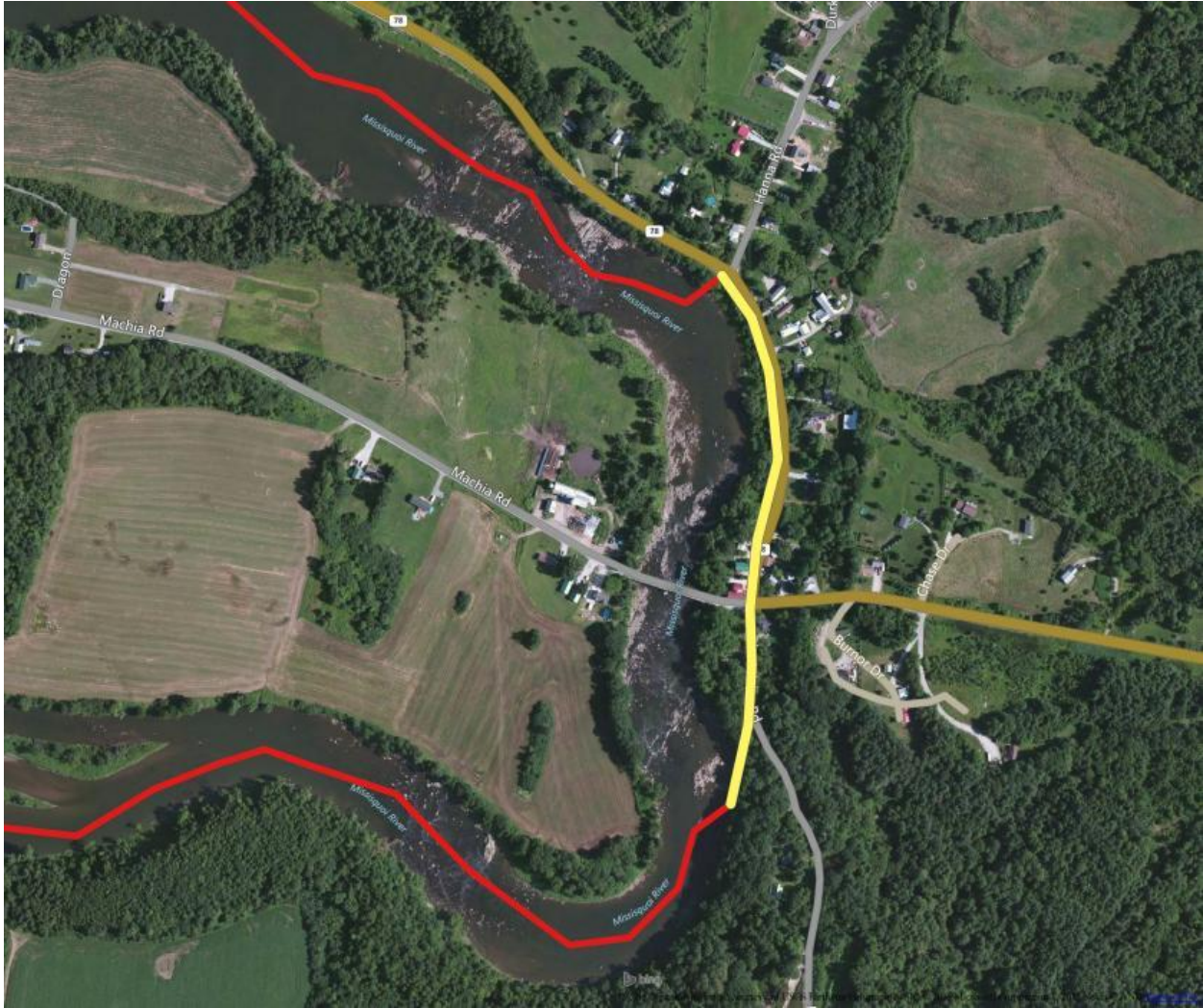


July 2006-A paddler was pinned against the dam remains and pulled below the water and through an undercut hole in the very bottom of the dam. The paddler was flushed by the current to the other side of the dam and received minor injuries.

Close-up View of NFCT Map 4



Satellite Imagery of East Highgate Dam Remains Portage



The NFCT works to maintain landowner agreements and maintain the access, portage, and campsites along the 740-mile trail corridor. Please [become a member](#) or give to the [Trail Fund](#) to keep the Trail alive.