



NFCT Trail Update

Map: 8

Date of Update: 3-10-2015

Location: [Maine Forestry Museum](#)

Waterbody: [Haley Pond](#)

Town: [Rangeley, ME](#)

Lat/Long: [44° 58' 28.79" N, 70° 37' 33.52" W](#)

Elevation: [1,555 feet](#)

Overview: Our good friends at the Maine Forestry Museum (formerly Rangeley Lakes Regional Logging Museum) located down Route 16 on the north side of Haley Pond have allowed us to install a portage trail connecting Haley Pond to the Logging Museum and reducing the amount of portaging that needs to occur on Route 16. The portage is called Gull Pond Stream Portage Trail and can be found by exploring the northern shore of Haley Pond.

There are two camping opportunities; one in a lean-to the NFCT constructed in 2014 the other at the shelter closer to the museum.

Site Information: The Gull Pond Stream Portage Trail is approximately ¼ mile long. It gradually works its way uphill from the shore of Haley Pond, through a woods trail. At the “y” if you take a left you will come out at the shelter. If you take a right you will soon find a bridge then an incline. At the top of the incline take a left and you will find the new lean-to.

Camping Options:

Shelter: Follow [Leave No Trace](#) principals as there are no outdoor bathroom facilities at this time. Fires are permitted in designated locations. Water is available, either at the spigot attached to the museum, or at an outdoor sink at the shelter. Occasionally the Forestry Museum has events that utilize the shelter, at these times the area will not be available for camping.

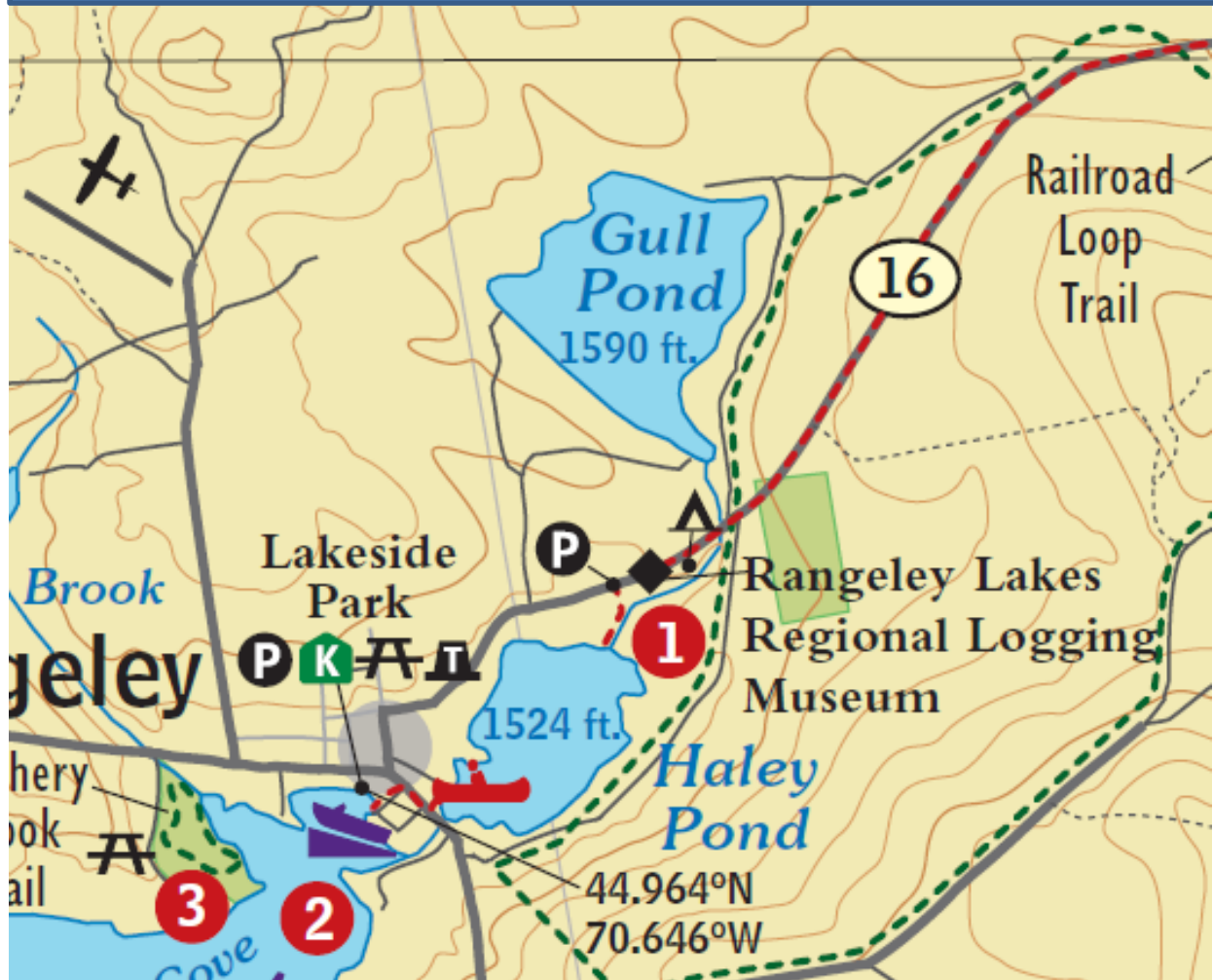
Lean-to: The Lean-to can sleep 4-5 comfortably. It is based on the Adirondack designs. The NFCT plans to build a double chamber moldering privy and fire ring in 2015. Until the outhouse is installed please use the Leave No Trace principals and leave the location better than you found it.



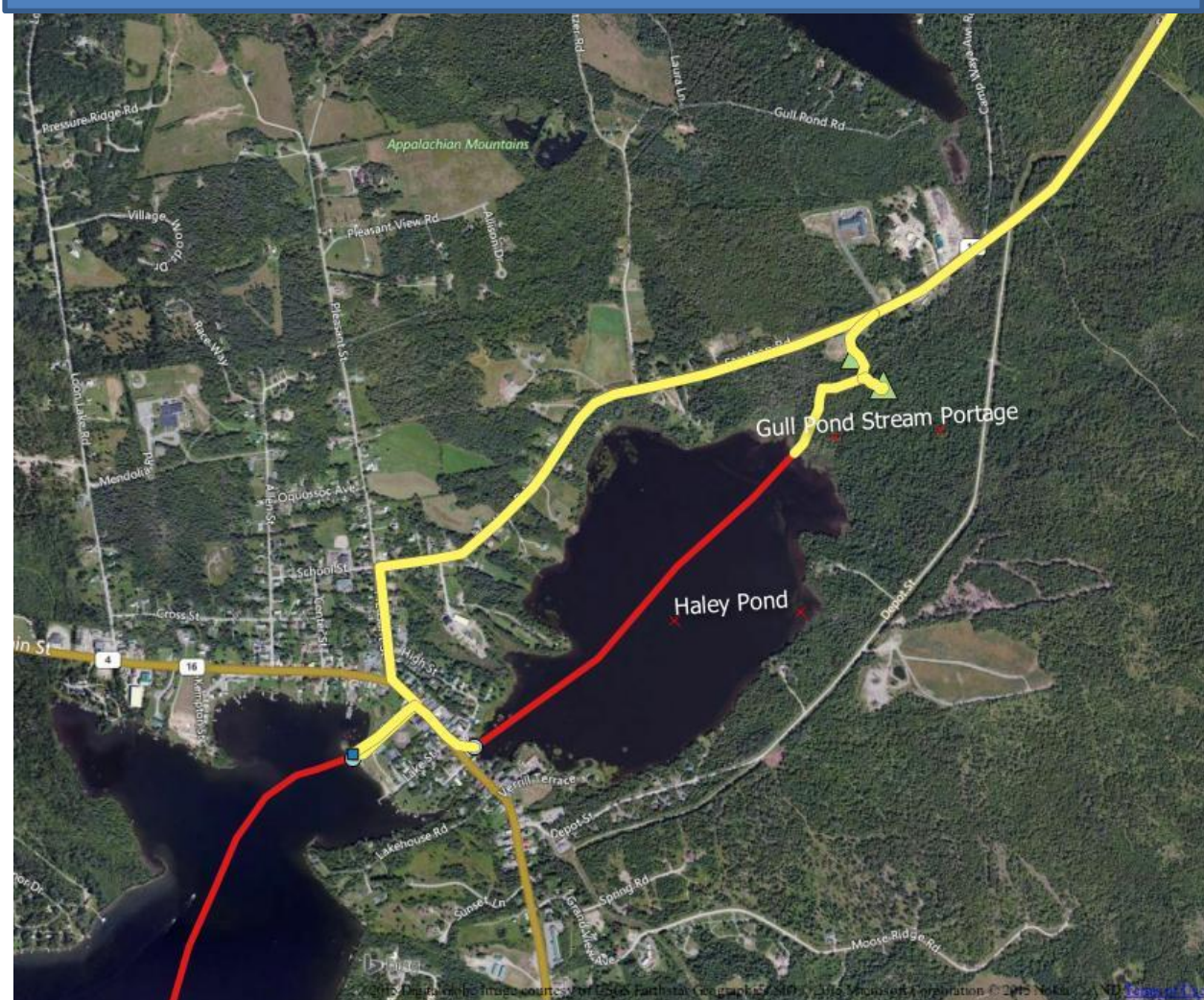
Maine Forestry Museum Lean-to.

The NFCT works to maintain landowner agreements and maintain the access, portage, and campsites along the 740-mile trail corridor. Please [become a member](#) or give to the [Trail Fund](#) to keep the Trail alive.

Close-up View of NFCT Map 8



Satellite Imagery of Rangeley Portage Options



Satellite Imagery of Maine Forestry Museum Camping Options

