



NFCT Trail Update

Map: [11](#), [12](#), [13](#)

Date of Update: 3-25-16

Location: Penobscot River Corridor, North Maine Woods Incorporated, and the Allagash Wilderness Waterway

Waterbody: West Branch of the Penobscot River, Chesuncook Lake, Mud Pond, Allagash Wilderness Waterway waterbodies

Town: Between Rockwood, ME and Allagash Village, ME

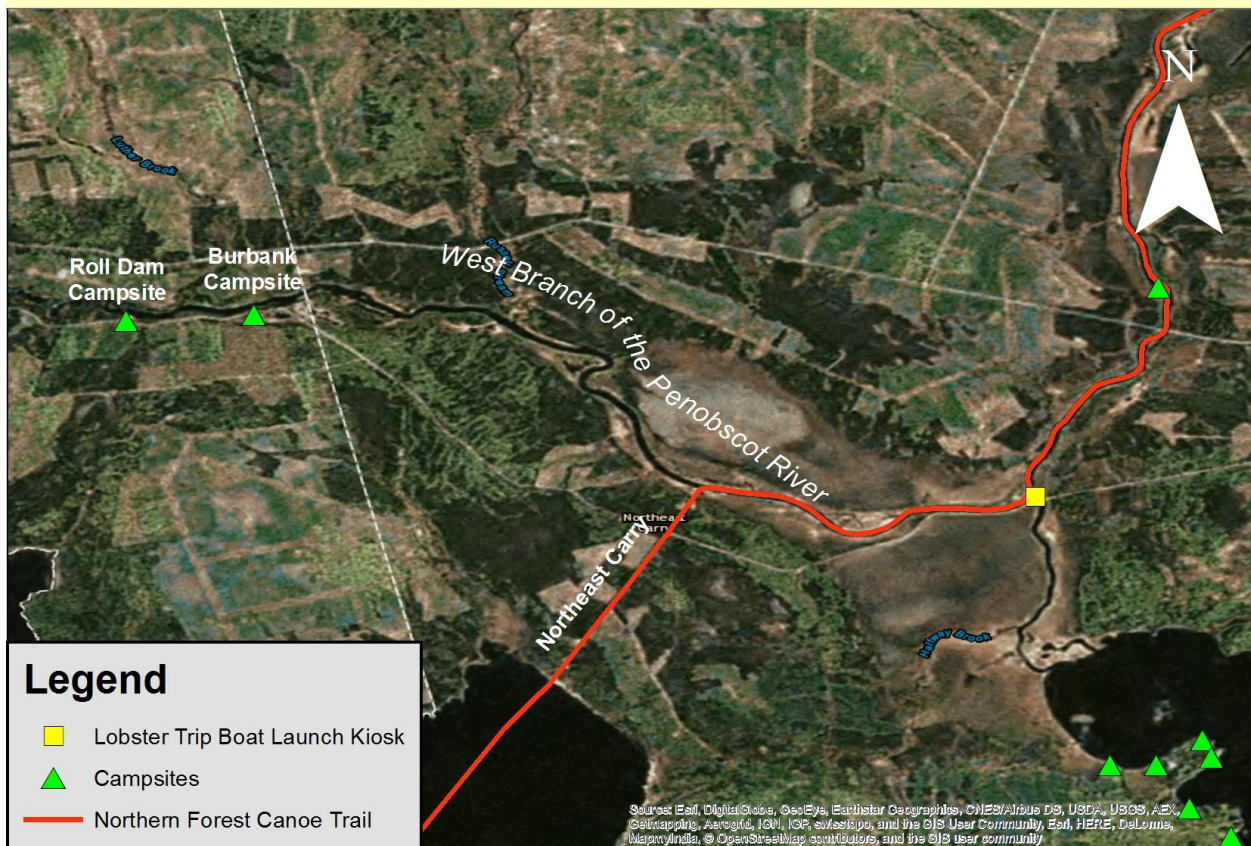
Overview: There are a variety of fees covering campsites and road access in the areas of the Penobscot River Corridor and the Allagash Wilderness Waterway, some fees are implemented by the Maine [Department of Agriculture, Forestry, and Conservation](#) others by [North Maine Woods, Inc.](#) If you are entering this area by roadway you will be able to take care of fees associated with road use and campsites at the gateways. You can pay for use of [North Maine Woods campsites](#), [Penobscot River Corridor campsites](#), and [Allagash Wilderness Waterway campsites](#) at the North Maine Woods entrance gates. To better understand the locations of gates and the area that is considered the North Maine Woods we recommend that you view this [map](#). We hope this document helps clarify the process of paying for campsite fees if you paddle and portage your way to through these areas.

Penobscot River Corridor

Accessed via the Northern Forest Canoe Trail by either the Northwest or Northeast Carry the West Branch of the Penobscot River flows into Chesuncook and is considered part of the Penobscot River Corridor (PRC). As of 2016 the campsites found along this stretch are \$6.00 per person, per night; nonresident - \$12.00 per person, per night. Children under 10 free. Two campsites between the Northwest and Northeast Carries have iron rangers (Roll Dam and Burbank) where you can pay for your campsites. The PRC Ranger will also leave campsite fee forms at the kiosk located at the Lobster Trip Boat Launch where you will also

find a location where you can leave your campsite payments. It is recommended by area managers that paddlers pay at these locations with cash or check if you have accessed the corridor by paddle and portage. Driving to begin this trip will usually have you pass through the 20-Mile or Caribou Checkpoints where payments can be made. Be sure to read the [Penobscot River Corridor rules and regulations](#) before you make the trip.

Iron Ranger Locations: PRC



North Maine Woods, Inc.

As you are transitioning into the Allagash Wilderness Waterway (AWW) you will be passing through North Maine Woods, Inc. lands as you cross the north end of Umbazooksus Stream, cross Umbazooksus Lake, and Mud Pond. The North Maine Woods has a long history of managing this vast region of 3.5 million acres for recreational access for the public. There is a fee structure to help cover the costs of managing the road network as well as the recreational infrastructure. You can

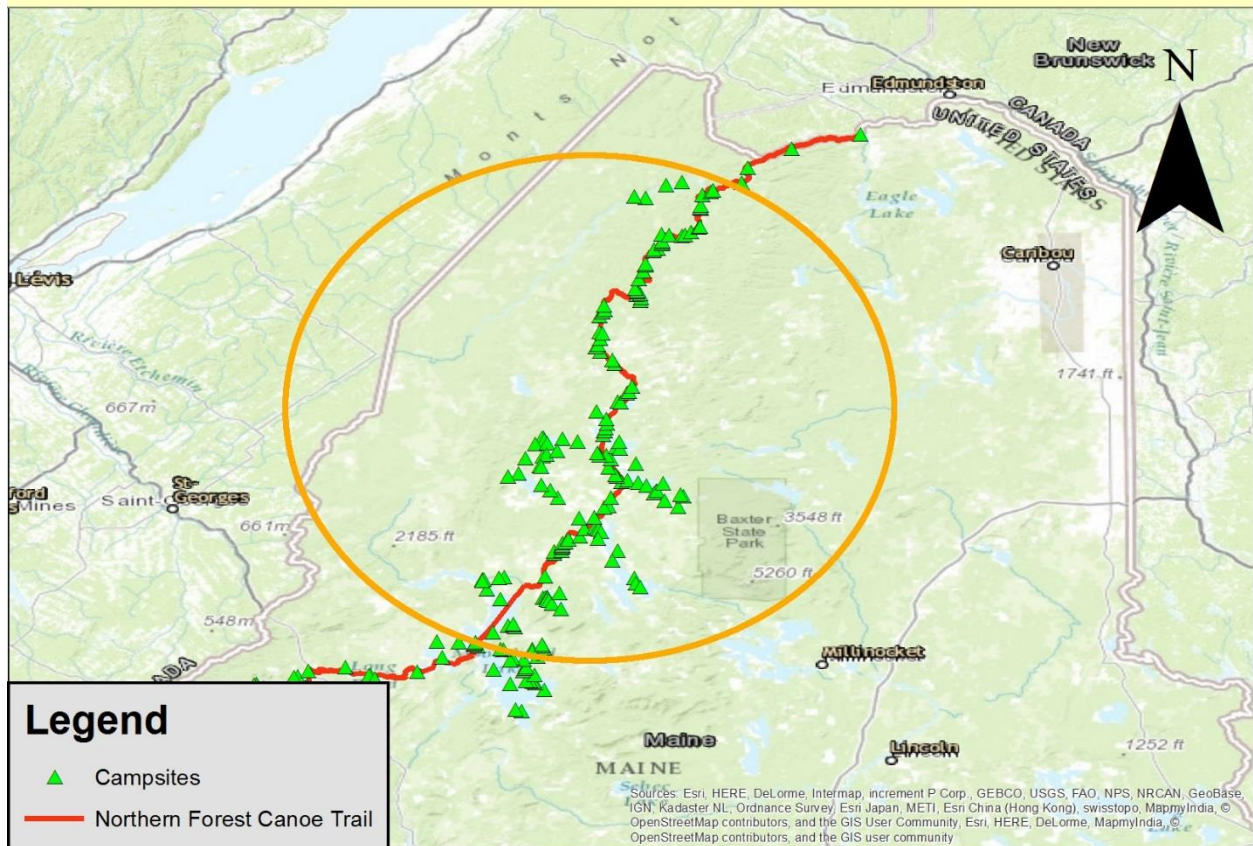
find the fees by following this [link](#). The land-based travel through this area is not considered an official part of the Northern Forest Canoe Trail. It is a long standing practice of the landowners to allow public recreation in this area and the utmost respect should be given to the land, its managers, and its history. The North Maine Woods, Inc. has two primary campsite types; Authorized Campsites and Designated Fire Permit sites. As you travel through this area you will find two North Maine Woods, Inc. campsites in the north end of Umbazooksus Stream. It will be difficult for you to pay for use of these sites as you will not encounter a checkpoint in your travels. The NFCT recommends planning your travels to stay at the public sites on Gero Island, or utilizing the primitive North Maine Woods, Inc. campsite found not far from the take-out for the Mud Pond Carry (there are no fires allowed at this location).

For more detail about fees associated with the North Maine Woods, Inc., the PRC, and the AWW we recommend reading the summary provided at this [link](#).

The Allagash Wilderness Waterway

The Allagash Wilderness Waterway (AWW) is the first state managed Wild and Scenic River. Rangers throughout the waterway work hard to ensure that sites are properly managed and a wilderness character is maintained. If you are finding your way into the 92-mile Allagash Wilderness Waterway by way of paddle and portage you will not pass a North Maine Woods, Inc. checkpoint to pay. In this case you will need to make your payment at Churchill Dam. This is an ideal location to take care of fees because you will likely be taking advantage of the \$10 shuttle service offered to transport your gear around Chase Rapids. The campsite fees for the AWW are \$6.00 per person, per night; nonresident - \$12.00 per person, per night. Children under 10 free. Be sure to have the appropriate amount of cash or a check with you. You will estimate the number of nights you will continue to camp in the AWW after Churchill Dam.

General Area of Focus



The NFCT works to maintain landowner agreements and maintain the access, portage, and campsites along the 740-mile trail corridor. Please [become a member](#) or give to the [Trail Fund](#) to keep the Trail alive.