



NFCT Trail Update

Map: 4

Date of Update: 3-3-2015

Location: Sheldon Springs Upstream Carry (High Water)

Waterbody: Missisquoi River

Town: Sheldon Springs, VT

Lat/Long: 44° 54' 34.68"N, 72° 59' 00.10"W

Elevation: 219 ft.

Overview: During high waters it is difficult for those traveling upstream to make the take-out for the trail on river right near the outlet to the sluiceway. The portage on river right is the official NFCT portage, and is easier to portage with wheels because it is almost entirely on roadway.

There is a corridor on river left that can allow passage, but it is only to be used when conditions make it difficult to reach the river right portage. The NFCT is working to get the river left portage officially endorsed. Currently there are no signs for this portage option making it important to be familiar with directions and the lay of the land.

Site Information: Take out at a sandy beach on river left, across from the outlet to the Sheldon Spring Dam's sluiceway. Follow a woods trail (kept open by ATV use) to the powerline corridor. Take a left and follow the corridor 900 feet to a fenced in transfer station. Go up the gravel road and take a left on Mill Street. Travel 1,200 feet and take a left on Shawville Road. Follow Shawville Road 3,000 feet where you will meet up with the official NFCT portage. Continue until you reach a road cutting through a farmer's field and to the Missisquoi River.



The image to the left shows the take-out on the north side of the Missisquoi River. When the river is flowing at higher levels and the penstock is open it is nearly impossible to make it to this access point if traveling upstream.



The image to the left shows the take-out on the south side of the Missisquoi River. This location is a tapered sandy beach making for a good transition at a variety of water levels.

Close-up View of NFCT Map 4



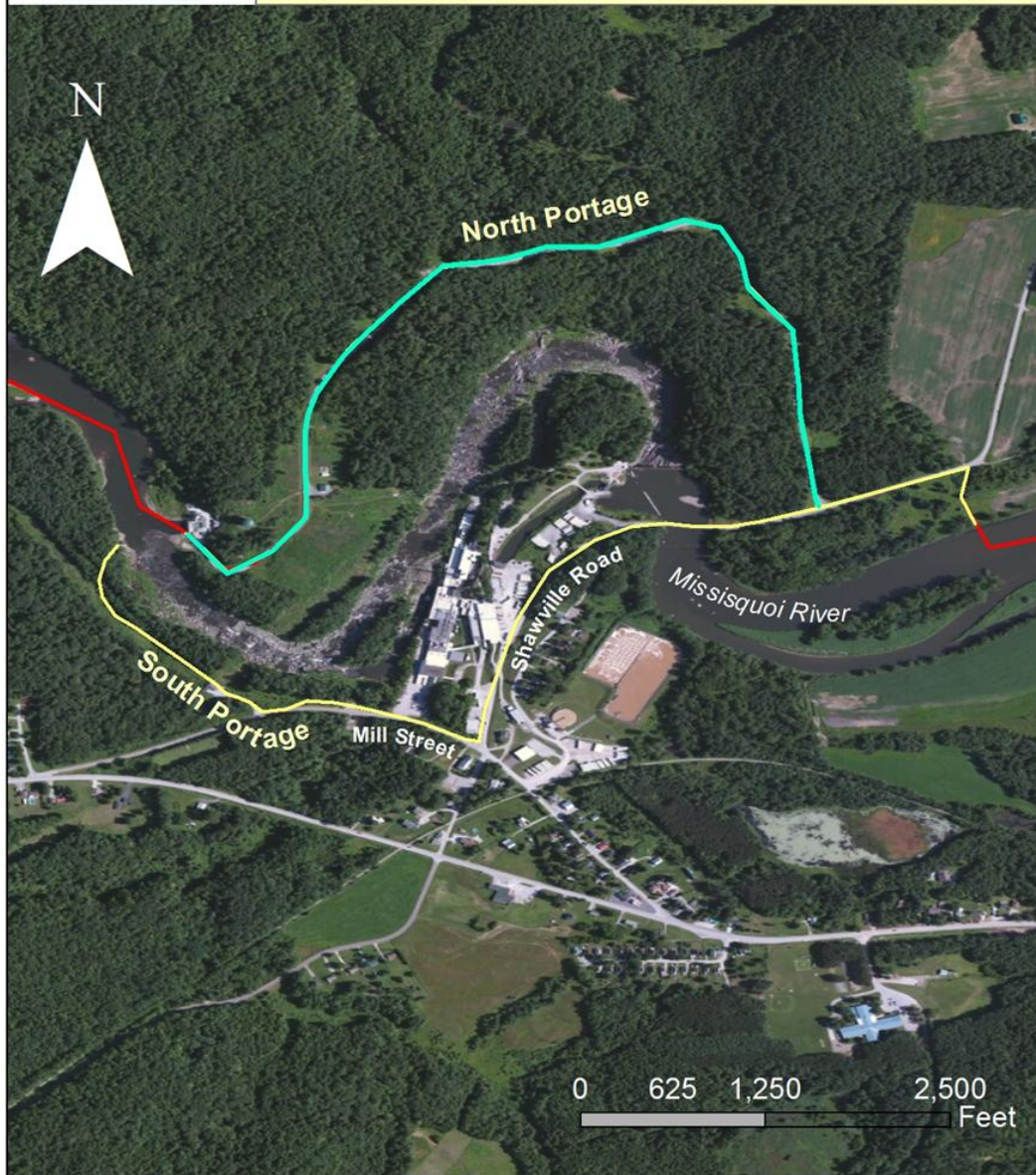
The NFCT works to maintain landowner agreements and maintain the access, portage, and campsites along the 740-mile trail corridor. Please [become a member](#) or give to the [Trail Fund](#) to keep the Trail alive.

Satellite Imagery of Sheldon Springs Dam Portage



Sheldon Springs Dam

Portage Options



The North Portage is the official NFCT portage. The South Portage is an option if conditions do not allow access to the North Portage take-out.