

NFCT Work Trip

Sloping Falls Access (VT)

July 27th-28th 2016



Introduction:

In partnership with the Vermont River Conservancy, we will be improving access to the Lamoille River at the beautiful Sloping Falls in Johnson, Vermont. This is part of a larger community project to develop a paddlers' trail for the Lamoille River. Work will involve constructing a 30' concrete "ramp" as well as erosion control infrastructure, including check dams and rock lined drainage swales.

Driving Directions and Meeting Location:

The project is located in Johnson, Vermont. In Johnson, cross the Lamoille on Railroad Street. Turn left on River Road. Drive for approximately 0.4 miles, past a sawmill. Look for a large parking area on the left, immediately before the road heads up hill. **Note:** This work trip is geared for volunteers coming for a day. Those interested in spending the night should make a reservation at nearby Green River Reservoir or Elmore Lake State Park.

For an interactive google map of the project site, go to: <https://goo.gl/ey2tfU>

What to Bring:

- Rain gear
- Long pants
- Work gloves
- Water bottle
- Lunch and snacks
- Personal carpentry tools, if you have your own favorites

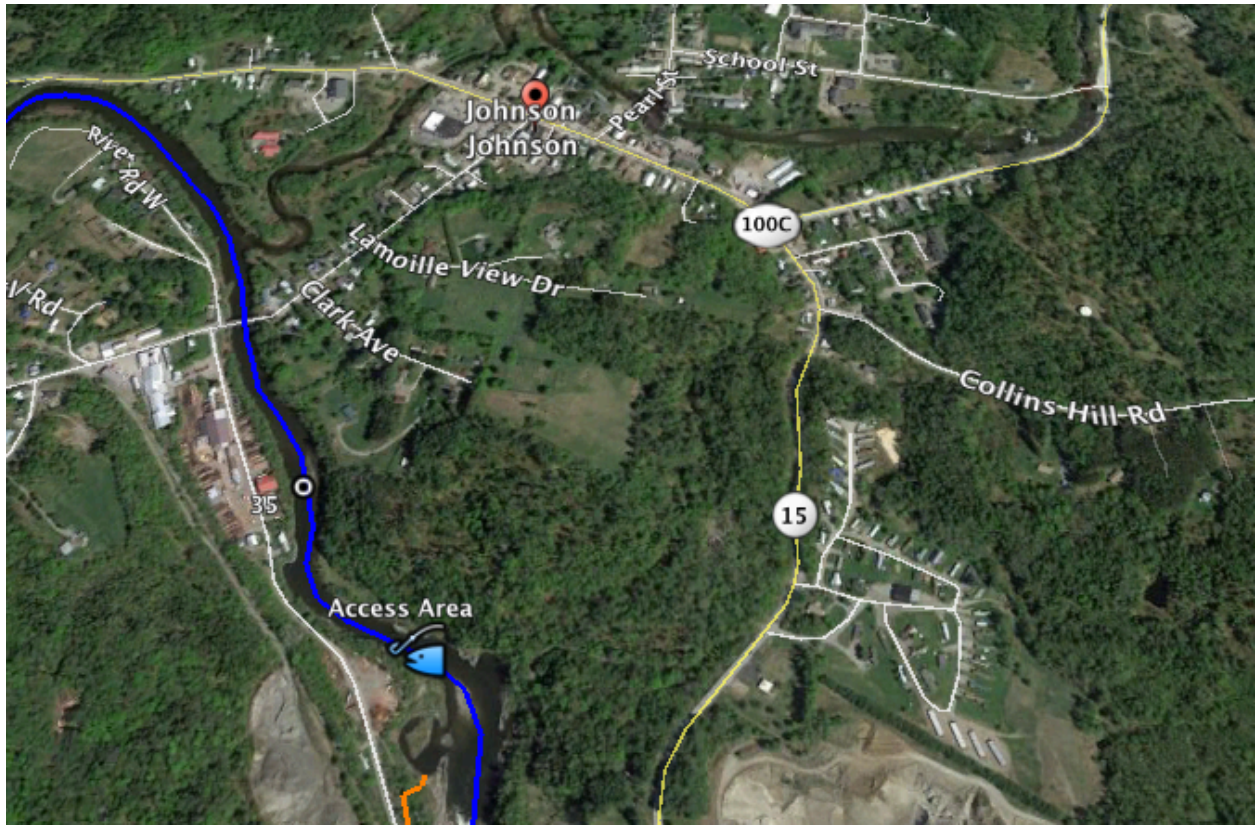
We will provide:

- Tools
- Extra water

Paddling:

This section of the Lamoille provides fine paddling after each work day, including through scenic Ithiel Falls, a short Class II rapid.

Project Map



Sloping Falls – Existing Conditions



Figure 1. Existing Access



Figure 2. Existing Erosion

Sloping Falls – Proposed Design



4' Concrete Ramp (cast in place)
18" ties anchored together with chain.
Set over 3" of gravel (1.75 yards)

2' Wide Ditch
Lined with Erosion
Control Stone(3-6")
1.75 yards



Erosion Control Weirs: Constructed out of cedar 6x8 rebared in place.