



NFCT Trail Update

Map: 10

Date of Update: 3-20-2015

Location: Demo Portage

Waterbody: Moose River

Town: Jackman, ME

Lat/Long: 45° 37' 05.23"N, 69° 58' 06.03" W

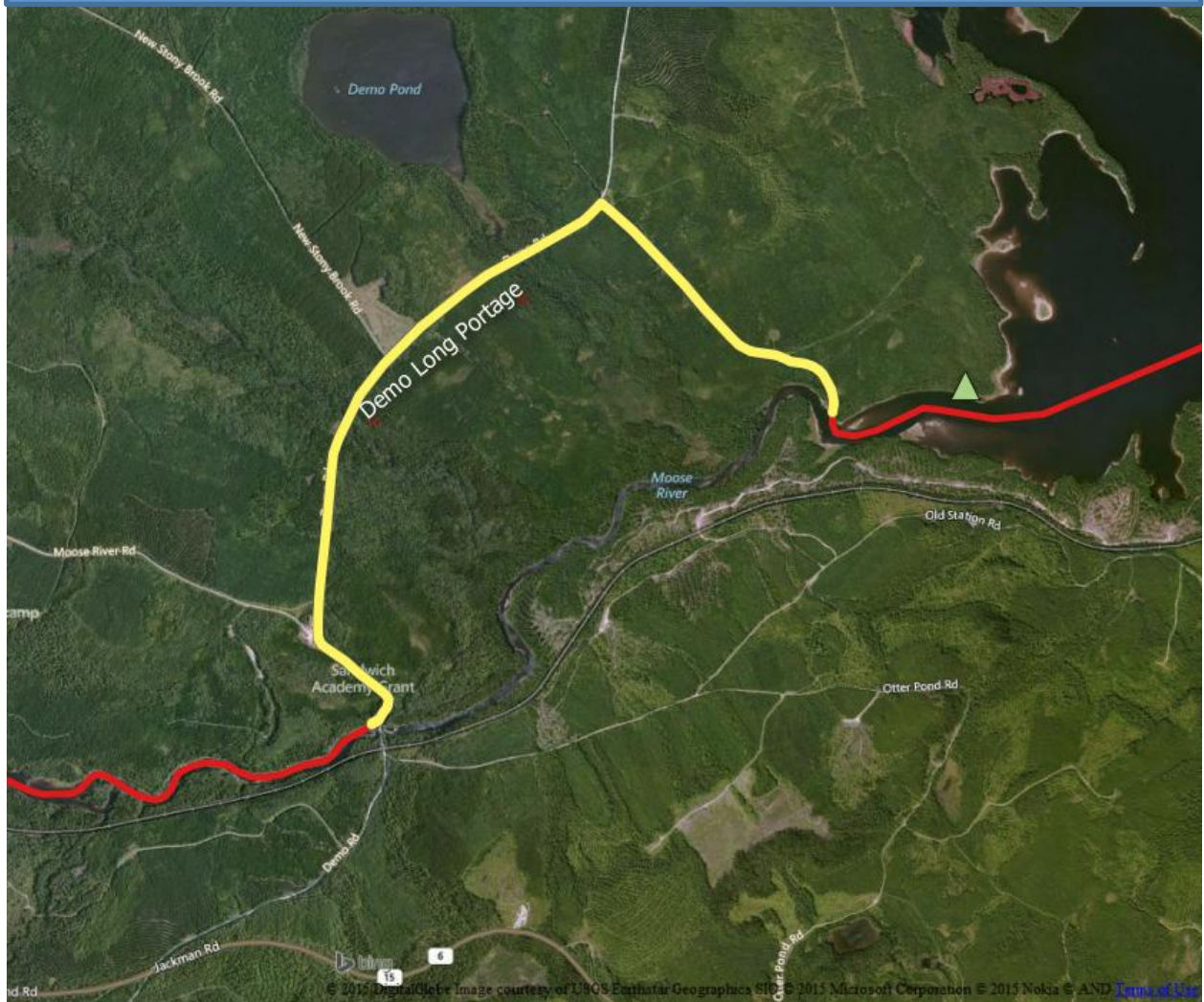
Elevation: 1,153 feet

Overview: There are Class 4 rapids located under the Demo Bridge on the Moose River. Downstream of Demo Bridge is a 2-mile stretch of Class 2 (some spots can be considered Class 3 under certain flows). The NFCT has worked with Plum Creek Timber Company to develop an endorsed portage around the area. The NFCT is currently working with Plum Creek and the Maine Bureau of Parks and Lands to create an endorsed, user-friendly "short portage" option that will allow paddlers wishing to run the 2-mile section of mostly Class 2 waters to have quick and easy access.

Site Information:

The Demo Long Portage (3 miles) begins by taking out on river left at an established take-out. After a short woods trail you will take a left and head north on Demo Rd., giving wide berth to logging trucks. After about 2,500 ft. take the right (eastern) fork. After 2.35 miles, take a right on to a one-lane woods road, there is a NFCT trail marker (confirmed 6/09) marking the turn (beware of an overgrown corridor leading south about 0.75 miles before the actual turn). Also be aware that the NFCT Map 10 (first edition) shows the turn to be before Demo Brook, it is actually after. Once on the one lane woods road travel south about 0.75 miles to an overgrown logging yard with a signed trail to the right. This trail is a narrow hiking trail. Follow the trail about 0.25 miles to the Moose River just below the rapids.

Satellite Imagery of Demo Long Portage

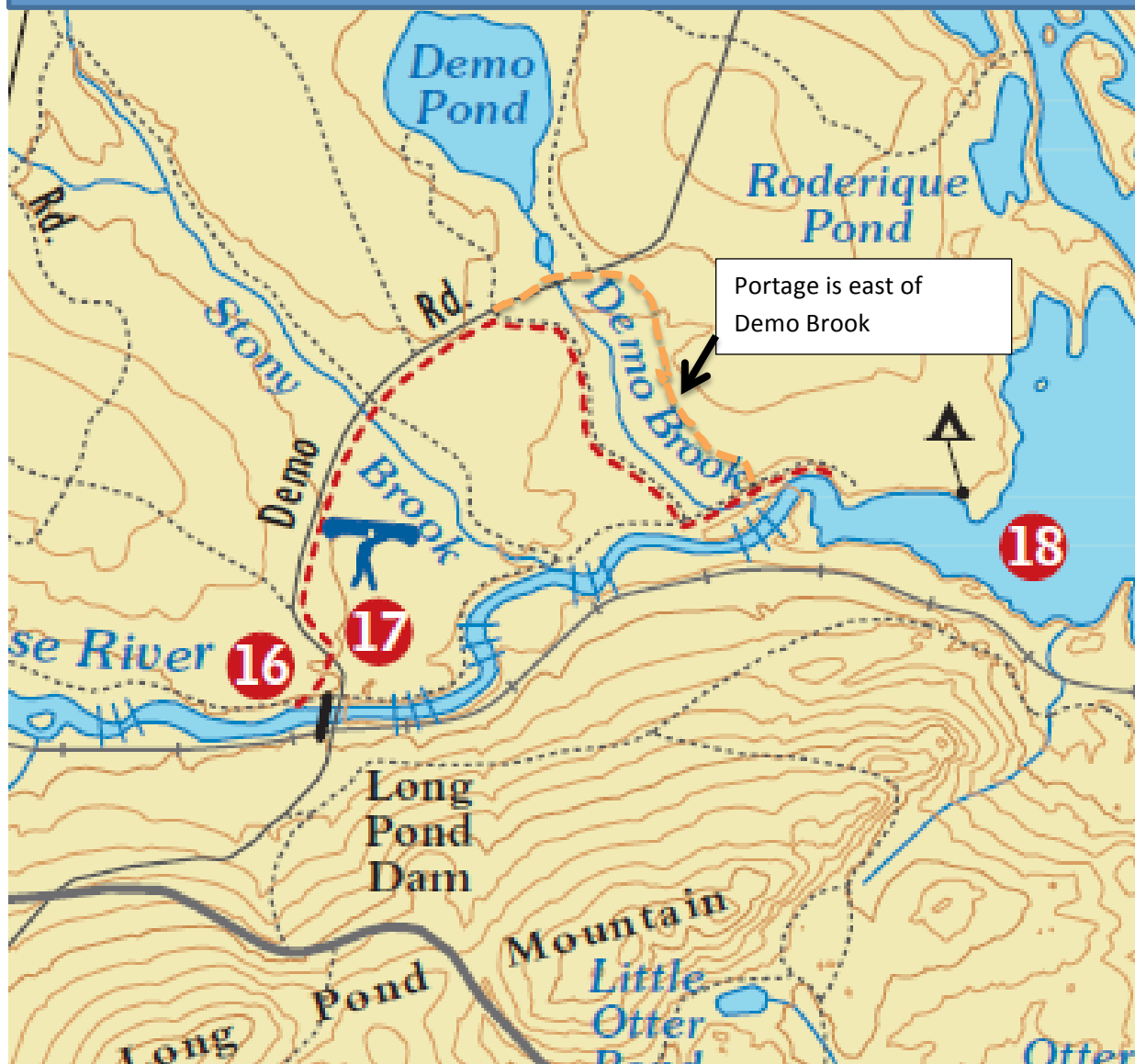


Demo Short Portage (800 ft) was installed in 2015 that bypasses the Class 3-4 rapids below the Demo Bridge and allows paddlers to explore the 2-mile stretch of Class 2 waters that follow. Carry across Demo Road, and follow a trail and set of stone steps to a landing. **Use extreme caution when crossing Demo Rd, it is narrow and used by logging trucks coming downhill.**

Satellite Imagery of the Demo Short Portage



Close-up View of NFCT Map 10



Rock Water Guage



In 2009 NFCT interns repainted the rock river gauge just upstream of Demo Bridge.

Gauge Reading	Typical Conditions Downstream of Demo Bridge
Below 0	Mostly Class 1, scratchy
0 to 1.5	Optimum for paddling
1.5	Long Class 3 rapids, few eddies
2	Water in the trees, long swim potential

1.5 and above on the river rock gauge is not recommended for paddlers who do not have the ability to run Class 3 waters or boat-scout and maneuver quickly. There is an especially challenging area where the river sweeps to the left. Lining is possible, but can be challenging.