

2019 Stewardship Season Recap



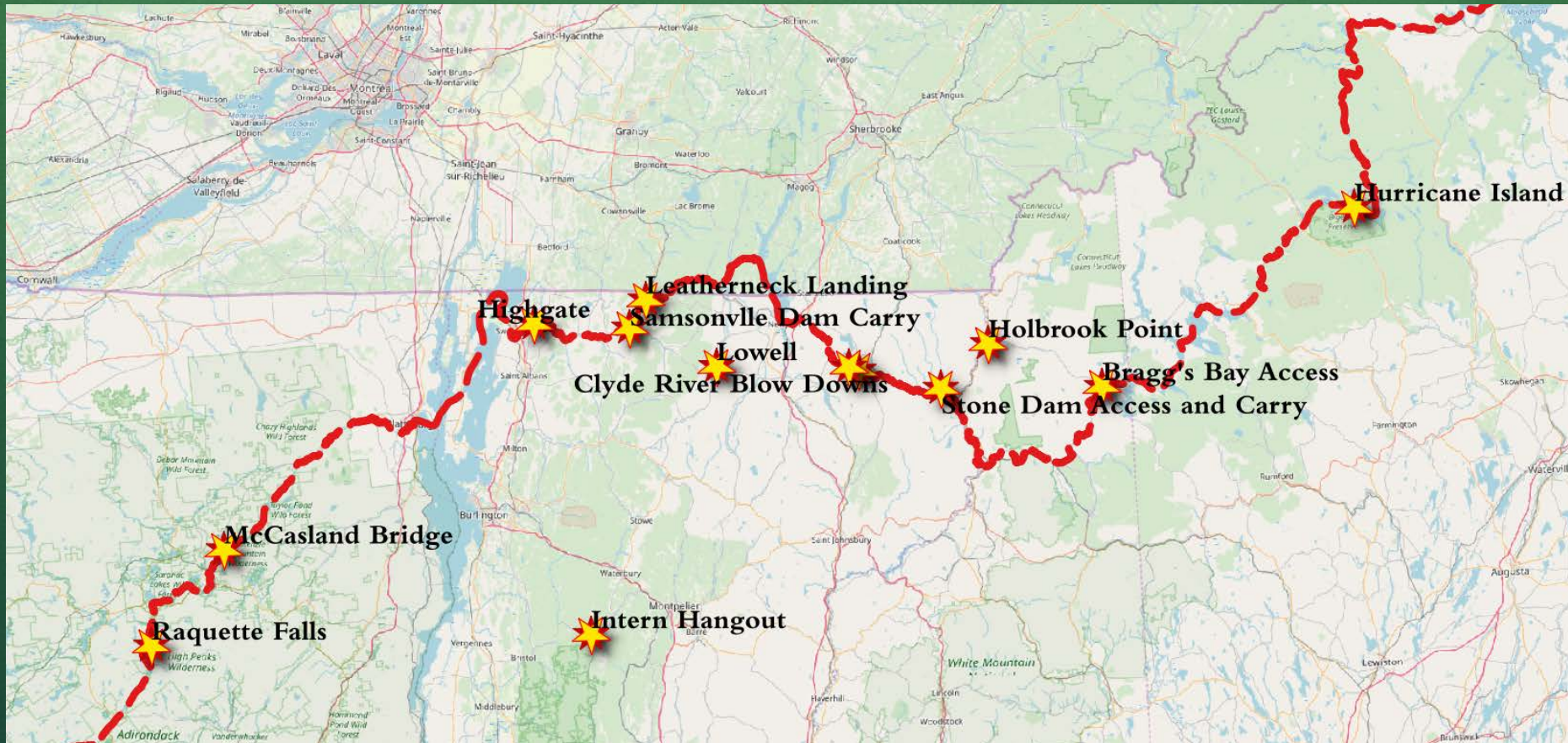
The Crew



30 WWT Participants



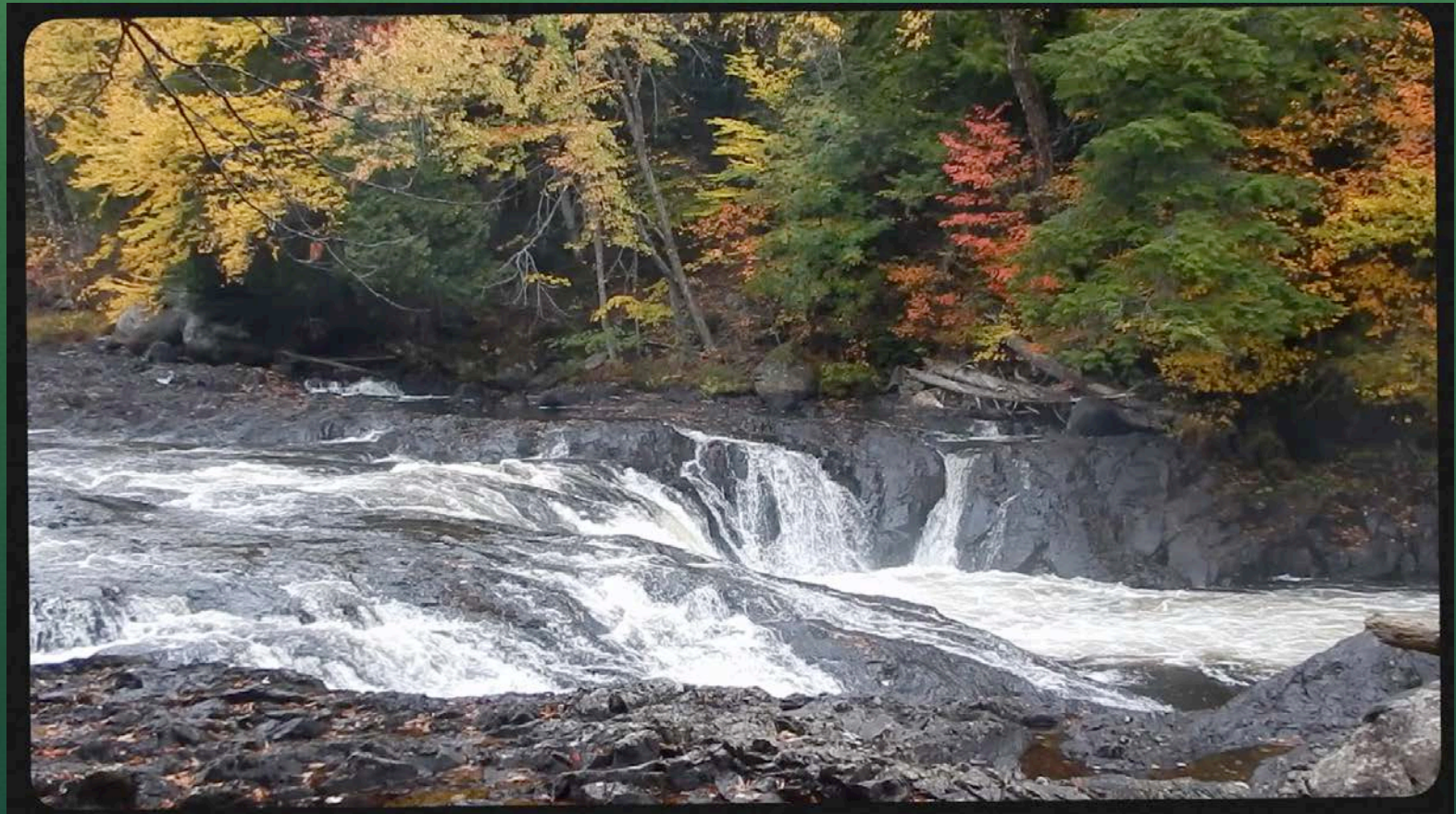
~15 Projects



Intern Hangout



Raquette Falls Vista Trail

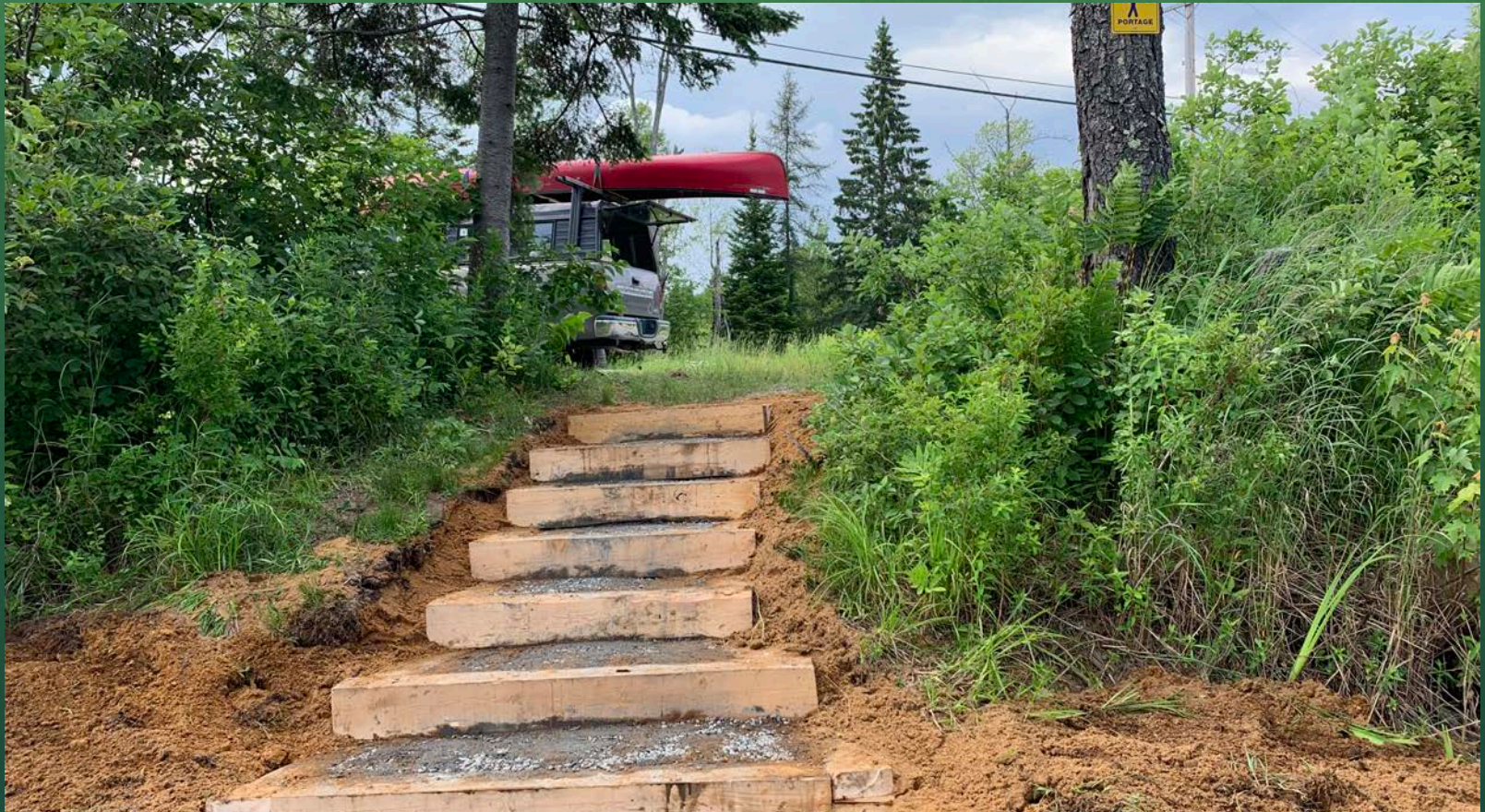








McCasland Bridge



[illegible]

A map titled "MOUNTAIN FOREST CANOE TRAIL" showing a route through the Adirondacks. The map includes labels for "Adirondack Park", "Montezuma", "Malone", "Saratoga", and "Troy". It also shows the "Hudson River" and "Lake Champlain". The trail is marked with a line connecting various points of interest.

Be a Responsible Paddler

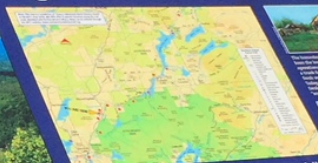
- Choose an appropriate class or lake for your skills and the time of year.
- Wear a life jacket.
- Be wary of wind, wind and lightning.
- Bring food, water and clothes for changing weather.
- Avoid hazardous trails in high water, fallen trees, debris. If in doubt, get out and wait.
- Don't paddle alone; keep your group small and together.
- Inform others of your trip plan.

You are standing at a landing point and river crossing which has been in existence for over two hundred years. Curious visitors will find a rich natural and cultural history to discover here.

Leave No Trace Stewardship Principles

- Plan Ahead and Prepare
- Travel and Camp on Durable Surfaces
- Dispose of Waste Properly
- Leave What You Find
- Minimize Campfire Impacts
- Respect Wildlife
- Be Considerate of Other Visitors

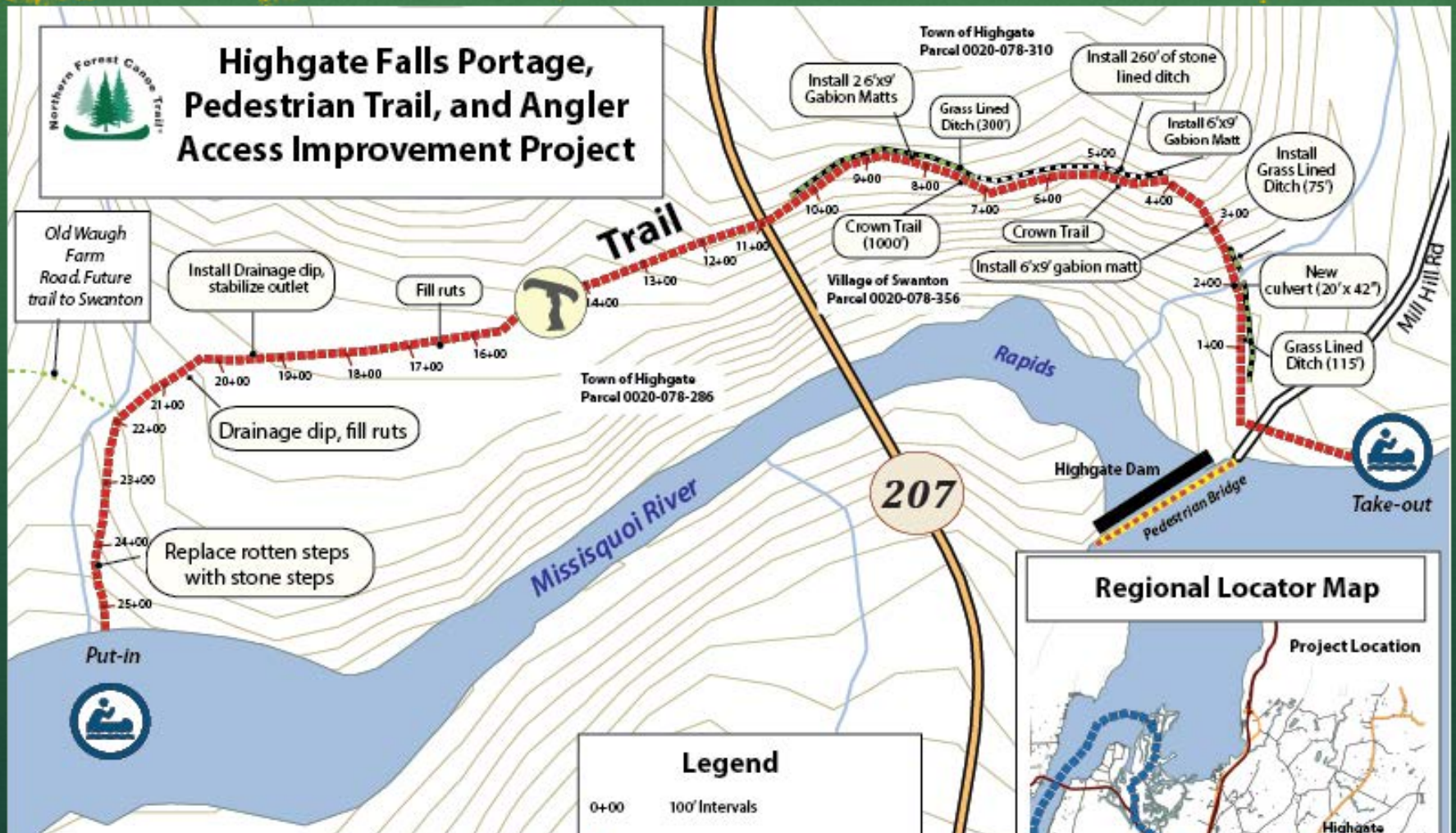
For more info: www.LNT.org



From Saranac Lake, the Saranac River flows peacefully for ten miles before reaching Class II-III Permanent Rapids. Paddlers journey a meandering course through mature floodplain forest, and are greeted with mountain vistas, both big and small.



Highgate Falls Carry



































Samsonville Dam





Lowell Access





The Tank of Troy



Leatherneck Landing









SMILE
YOU'RE ON CAMERA!

LEATHERNECK
LANDING



NorthWoods Landing Campsite, Clyde River





High Falls Campsite Clyde River



Clyde River Blowdowns





Nulhegan Stone Dam Carry







Downstream Access



Nulhegan Gorge Carry





Holbrook Point Campsite





Errol – Bragg's Bay Access











**LEADER
OF LEADERS**
Blaze your trail.



Hurricane Island





Hurricane Island

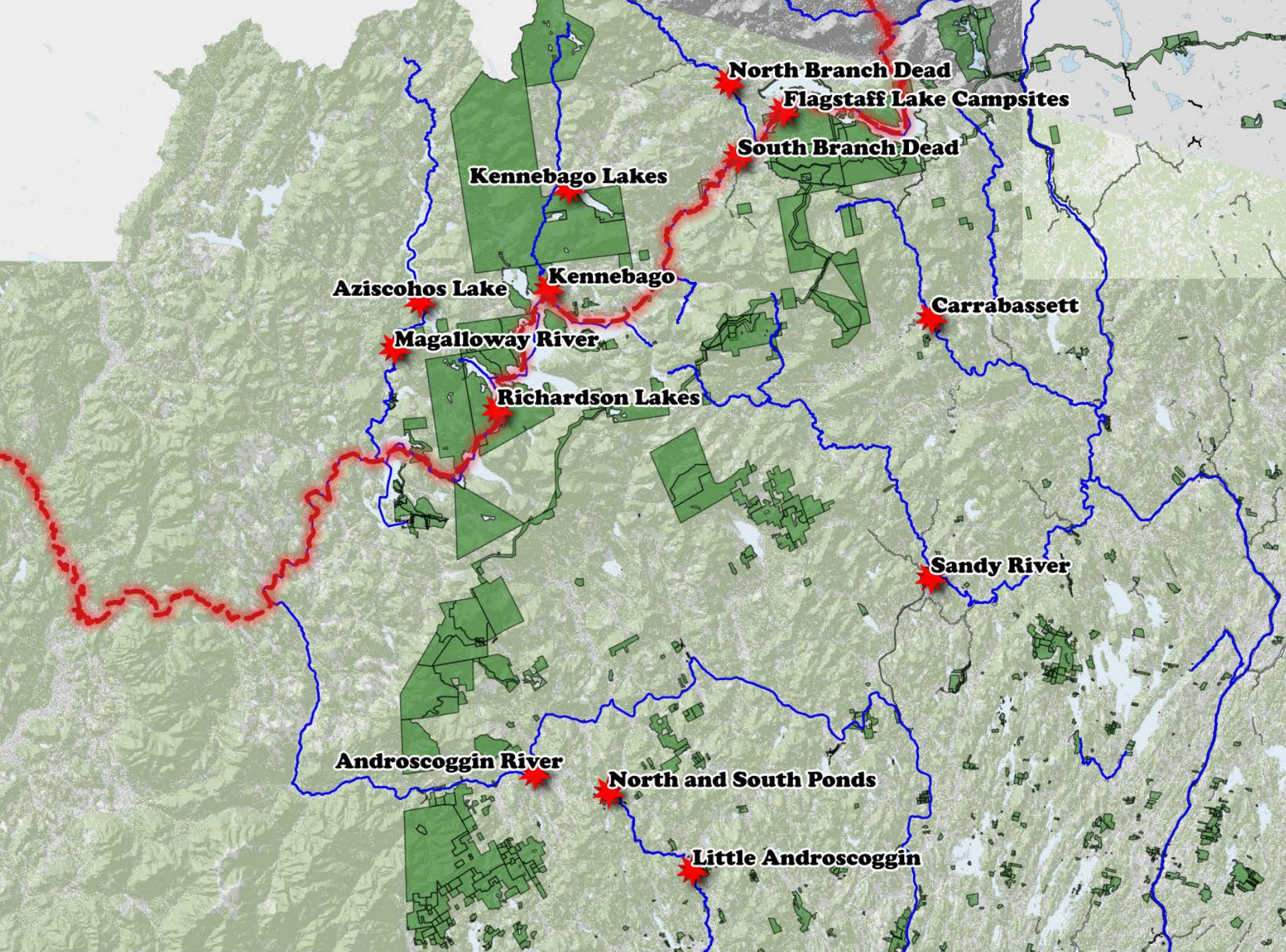






Maine Waterways Mapping







Data!

[illegible]

South Branch Dead

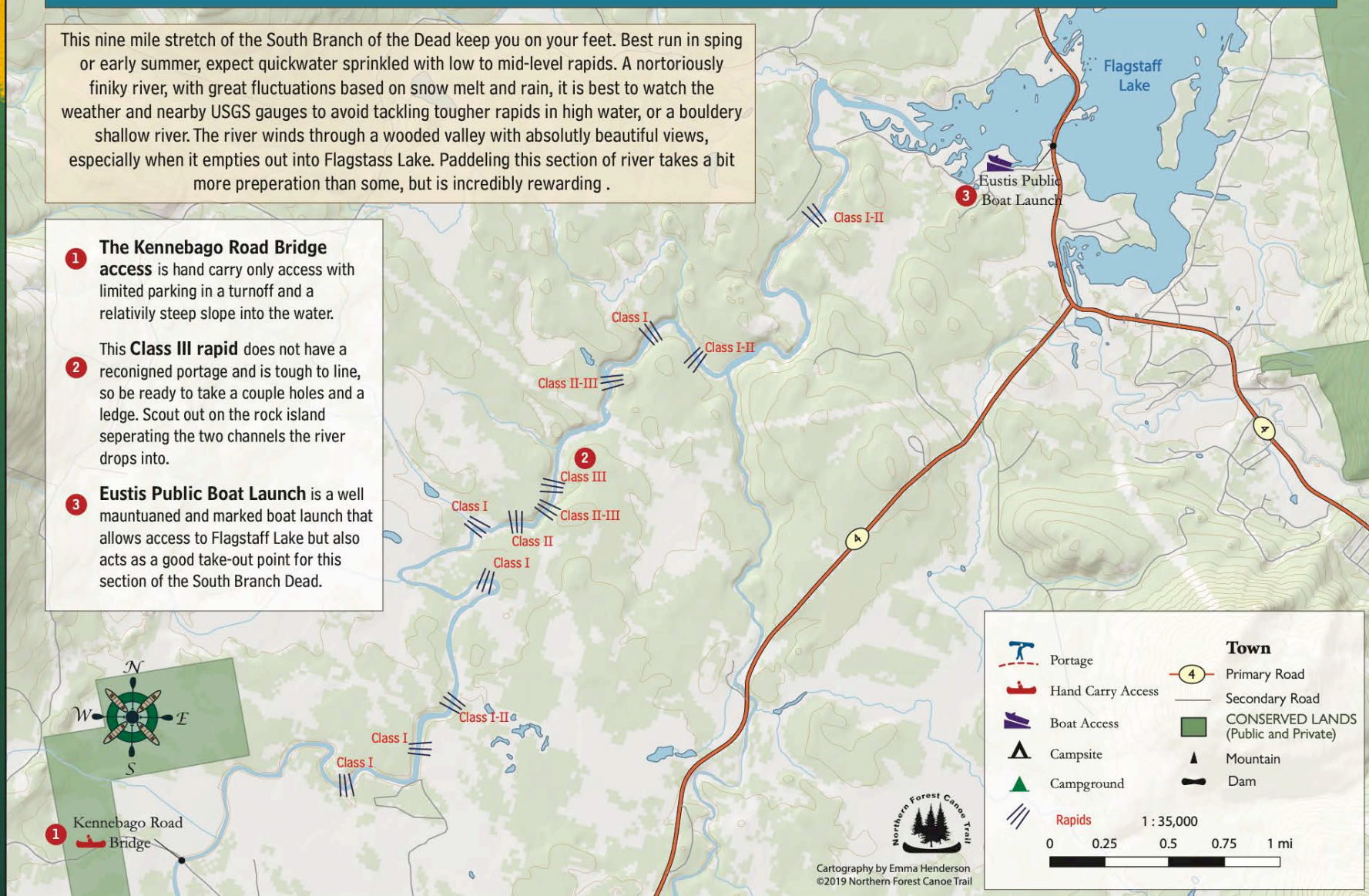




South Branch Dead: Kennabago Road Bridge Access to Route 27 Bridge Access

This nine mile stretch of the South Branch of the Dead keep you on your feet. Best run in spring or early summer, expect quickwater sprinkled with low to mid-level rapids. A notoriously finiky river, with great fluctuations based on snow melt and rain, it is best to watch the weather and nearby USGS gauges to avoid tackling tougher rapids in high water, or a bouldery shallow river. The river winds through a wooded valley with absolutely beautiful views, especially when it empties out into Flagstaff Lake. Paddling this section of river takes a bit more preparation than some, but is incredibly rewarding .

- 1 The Kennabago Road Bridge access** is hand carry only access with limited parking in a turnoff and a relatively steep slope into the water.
- 2 This Class III rapid** does not have a reconigned portage and is tough to line, so be ready to take a couple holes and a ledge. Scout out on the rock island separating the two channels the river drops into.
- 3 Eustis Public Boat Launch** is a well mauntuned and marked boat launch that allows access to Flagstaff Lake but also acts as a good take-out point for this section of the South Branch Dead.



Sandy River

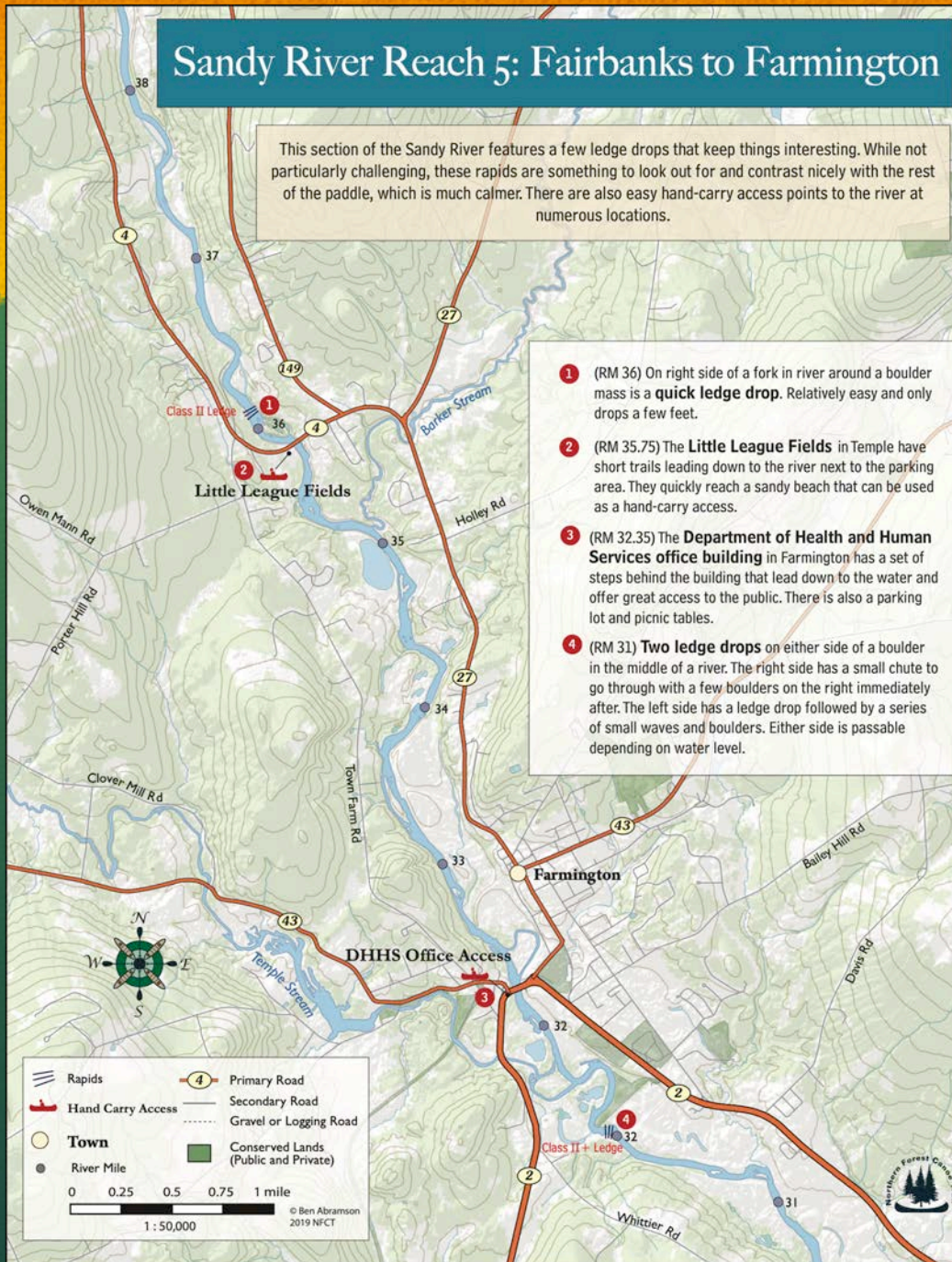




Sandy River Reach 5: Fairbanks to Farmington

This section of the Sandy River features a few ledge drops that keep things interesting. While not particularly challenging, these rapids are something to look out for and contrast nicely with the rest of the paddle, which is much calmer. There are also easy hand-carry access points to the river at numerous locations.

- 1 (RM 36) On right side of a fork in river around a boulder mass is a **quick ledge drop**. Relatively easy and only drops a few feet.
- 2 (RM 35.75) The **Little League Fields** in Temple have short trails leading down to the river next to the parking area. They quickly reach a sandy beach that can be used as a hand-carry access.
- 3 (RM 32.35) The **Department of Health and Human Services office building** in Farmington has a set of steps behind the building that lead down to the water and offer great access to the public. There is also a parking lot and picnic tables.
- 4 (RM 31) **Two ledge drops** on either side of a boulder in the middle of a river. The right side has a small chute to go through with a few boulders on the right immediately after. The left side has a ledge drop followed by a series of small waves and boulders. Either side is passable depending on water level.



North Branch Dead

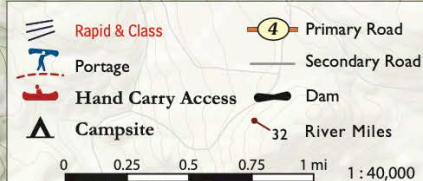




North Branch Dead River

Reach 2: Chain of Ponds Dam to Airport Road

This reach begins at the scenic Chain of Ponds Dam, and continues down the North Branch of the Dead River through pine and birch forests. With ample wildlife viewing to lowlands boasting hearty stands of alder lining the banks. Three ledge drops add excitement to this reach, with an interesting mix of dead water, quick water, and shallow sections that must be walked in between at low flows. Beware of the number of down trees and strainers obstructing the river after Sarampus Falls, some warranting lifting around.



- 1 (RM 5.5) A small but **unrunnable dam** starts this reach, with a short, easy portage to the left.
- 2 (RM 7.5) **Sarampus and Little Sarampus Falls** are the first real obstacle of this reach, providing Class II and III ledges and drops to the reach. These can be scouted and portaged using the picnic area and a short road walk on Route 27. The put-in is found inside the Route 27 guardrail, after the rip-rap on the shore.
- 3 (RM 8-11) Be prepared for several miles containing an **interesting mix** of dead water, quickwater, and shallow sections to keep you on your toes.
- 4 (RM 11.75) **Shadagee Falls** should be scouted from the shore. This interesting ledge drop can be run in moderate to high water, or portaged river right. Be prepared for quick water after the portage put-in.
- 5 (RM 13.5) **Airport Road** provides an access point and primitive campsite. The bridge connecting to Route 27 no longer exists, so this access must be reached by King & Bartlett Road a few miles to the south. See Reach 3 map for further river information.



Cartography by Josie Myers
 ©2019 Northern Forest Canoe Trail

NORTH BRANCH DEAD RIVER: KING AND BARTLETT ROAD TO FLAGSTAFF LAKE

[+ ADD TRAIL LOG](#)


A wonderful, easy paddle down the North Branch Dead River into Flagstaff Lake that is best done in the morning to avoid strong winds on the short section of Flagstaff Lake.

Trail Activity



Length

3.6 miles, Normal

Difficulty

Easy

Town

Eustis

Surface

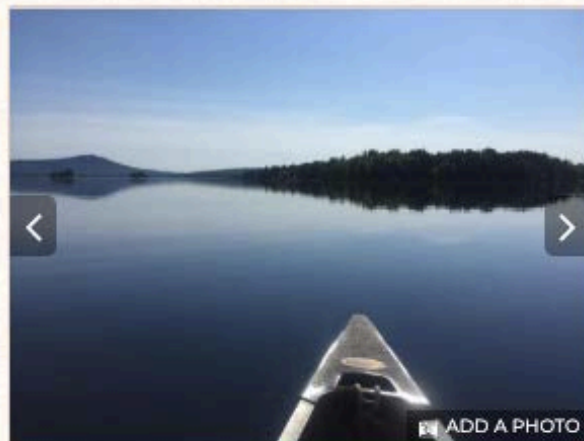
Lake/Pond, River/Stream


Pets

Permitted

Fees


No




 ADD A PHOTO

 DETAILS

 TRAIL MAP

 DIRECTIONS

 COMMENTS (0)

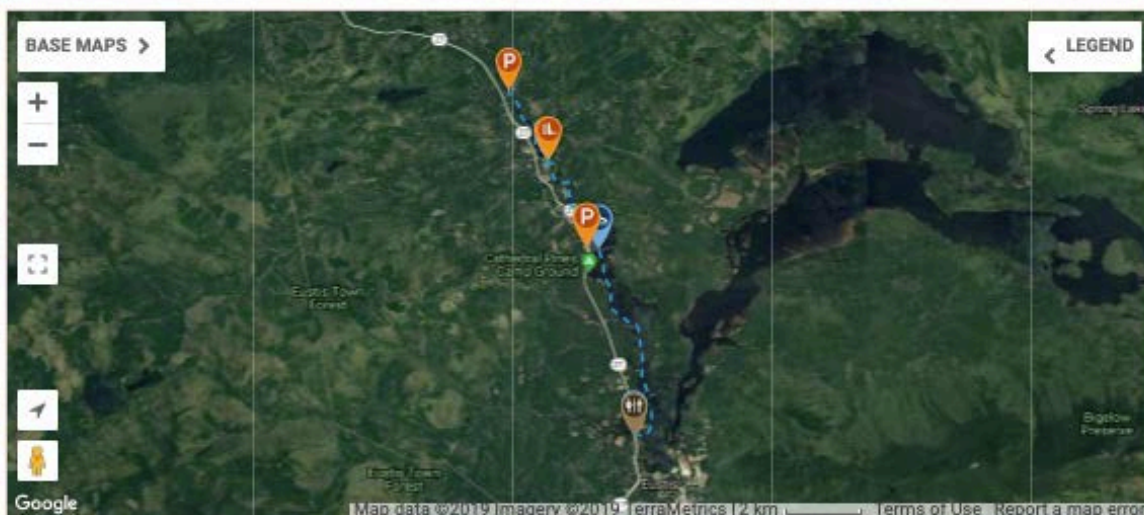
 SERVICES

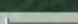
 TRAIL ALERTS

BASE MAPS >



Google



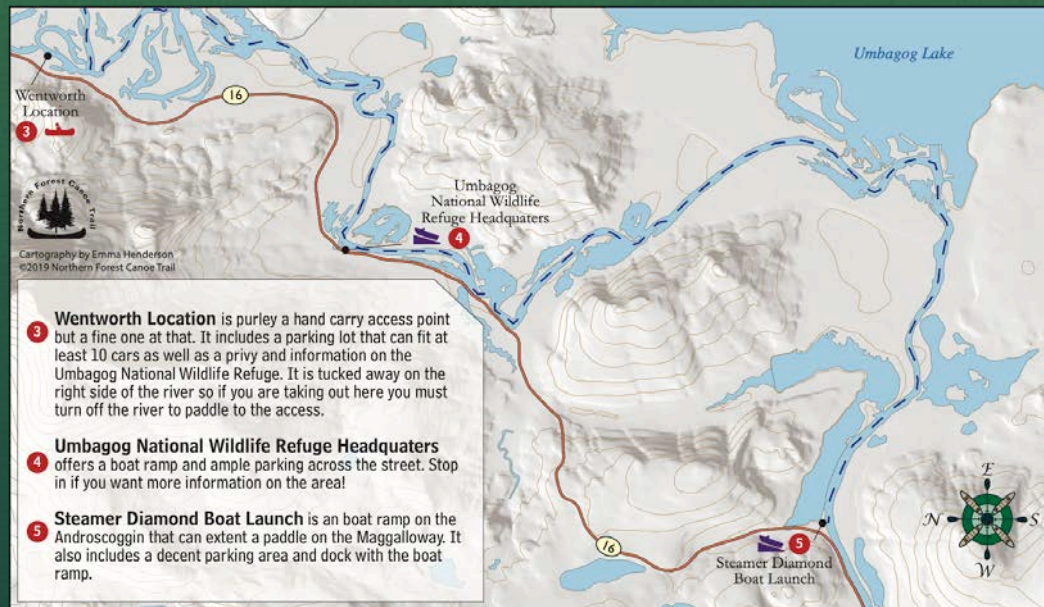
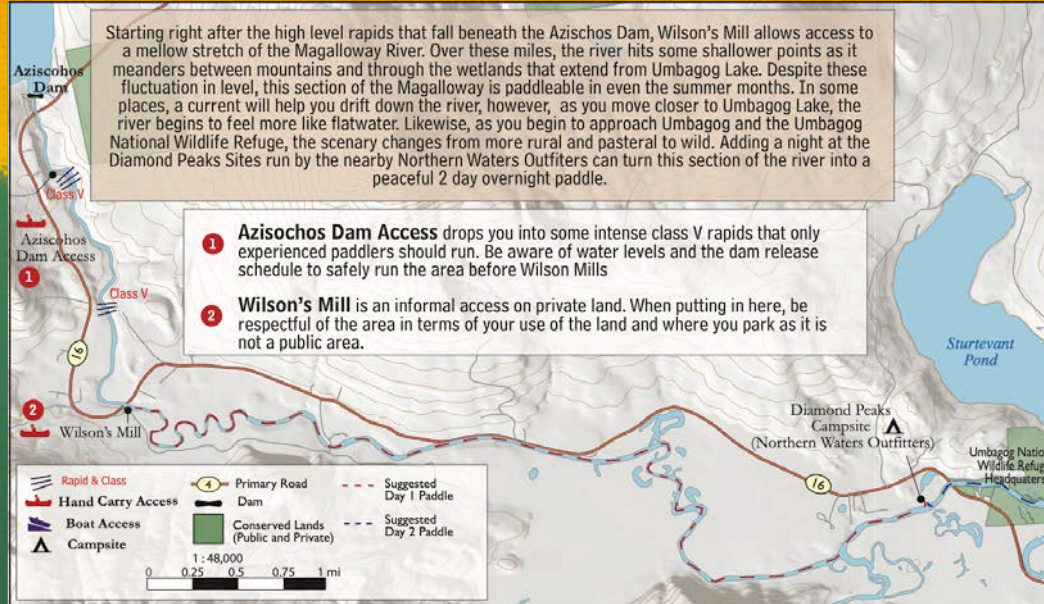
Map data ©2019 Imagery ©2019 TerraMetrics | 2 km  Terms of Use Report a map error

[VIEW CONNECTOR TRAILS](#)

Magalloway River



Two Day Paddeling Trip on the Magalloway River



Androscoggin









**Canoe
Portage**





Lindem Falls
Fishing Park



A Day Pond Paddle - North and South Ponds

Nestled in the hills of Greenwood, the North and South Pond offer great fishing, swimming, and scenic day paddling. These two larger ponds are connected by a more channel like area coined Round pond. Most of the shoreline of these ponds are private property, however there are public islands and beach areas on each pond that allow for public recreation. When traveling from pond to pond expect low bridges and culverts that only allow smaller crafts, such as canoes and kayaks to pass.

- 1 A good place to start this day paddle is the **public access point to Round Pond**. Here there is a trailerable boat ramp that leads into the channels of Round pond. There is also ample parking.
- 2 On of the first things you will pass on your way to North Pond is the **Greenwood Rest Area** on the side of Rt 26. Here there are picnic tables, a bathroom, and multiple hand carry access points to take out if need be. Keep in mind that after you enter North Pond there is no public place to land on the shore.
- 3 Passing under the bridge (**Johnny's Bridge**) to North Pond there is access on either side of the bridge for hand carried boat access. This access, however, has minimal parking and is rather informal. This bridge leads to Littlefield Beaches Campground, a scenic spot to stay.
- 4 While in North Pond, you will see a large rock protruding from the water, centrally located in the lake. This is **Rock Island**, a good place to stop for a lunch or lounge break. Adjacent to an island with an bald-eagle nest, if you're lucky you might also spot some eaglets here.
- 5 If you choose to continue your trip by heading back through Round pond into South Pond, you may consider heading to the southern most side where the **Greenwood Town Beach** is located. Be weary, the beach is for taxpayers and residents of Greenwood, however, there is a nice beachy area, picnic table, and bathroom. This can also be accessed by the road where there is a small turnoff area to park in off of Greenwood Rd.



Working Off the NFCT

- Does the project lead to improved access to the waters of the Northern Forest?
- Is the work related to our expertise? (facilitation, stewardship, mapping, communication)
- Is it a discreted, funded project?
- Do we have capacity?
- Are there clear, long term partners?

Examples

- Bow Loop Trip
- Upper Connecticut River
- Androscoggin River Trail
- Penobscot River Trail
- Lamoille River Trail
- Eastern Maine Canoe Trail

2020 Projects in the pipeline

- Deerland Carry, Raquette River NY
- Seperator Rapids Carry, Saranac River, NY
- Davis Park Access, Richford, Missiquoi River
- Upper Ammonoosuc Portages
- Long Pond/Brassua Lake Campsites
- Grand Falls/Dead River Access