

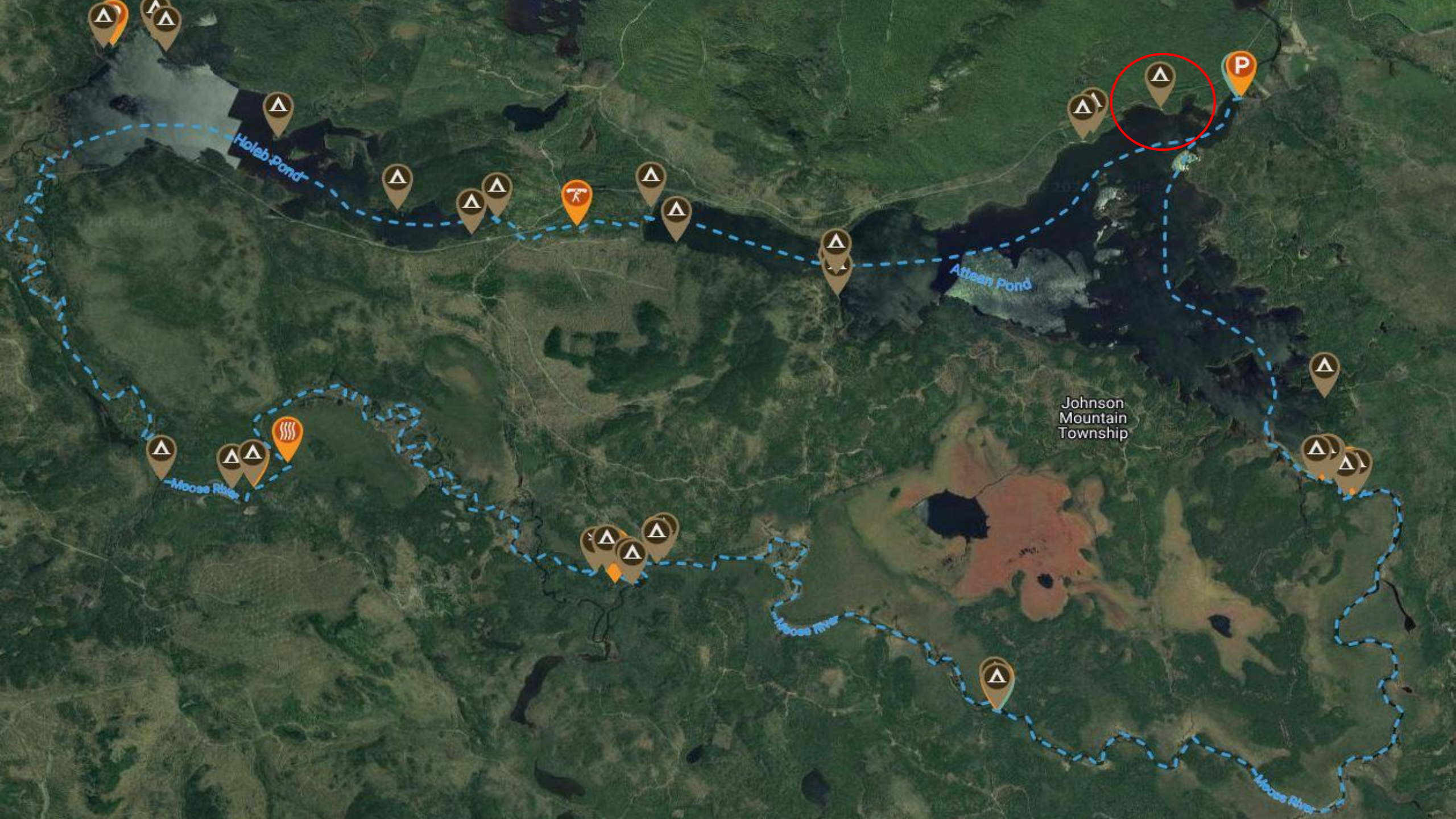
**Moose River Bow**  
**Trip**  
**Jackman, ME –**  
**35mi**

Local outfitter [Cry of the Loon](#) (207-668-7808) can lead or assist with the trip, providing shuttles (to avoid the 1.25-mile portage), gear, guides, or information.









Holeb Pond

Attean Pond

Johnson Mountain Township

Moose River

Moose River

Moose River



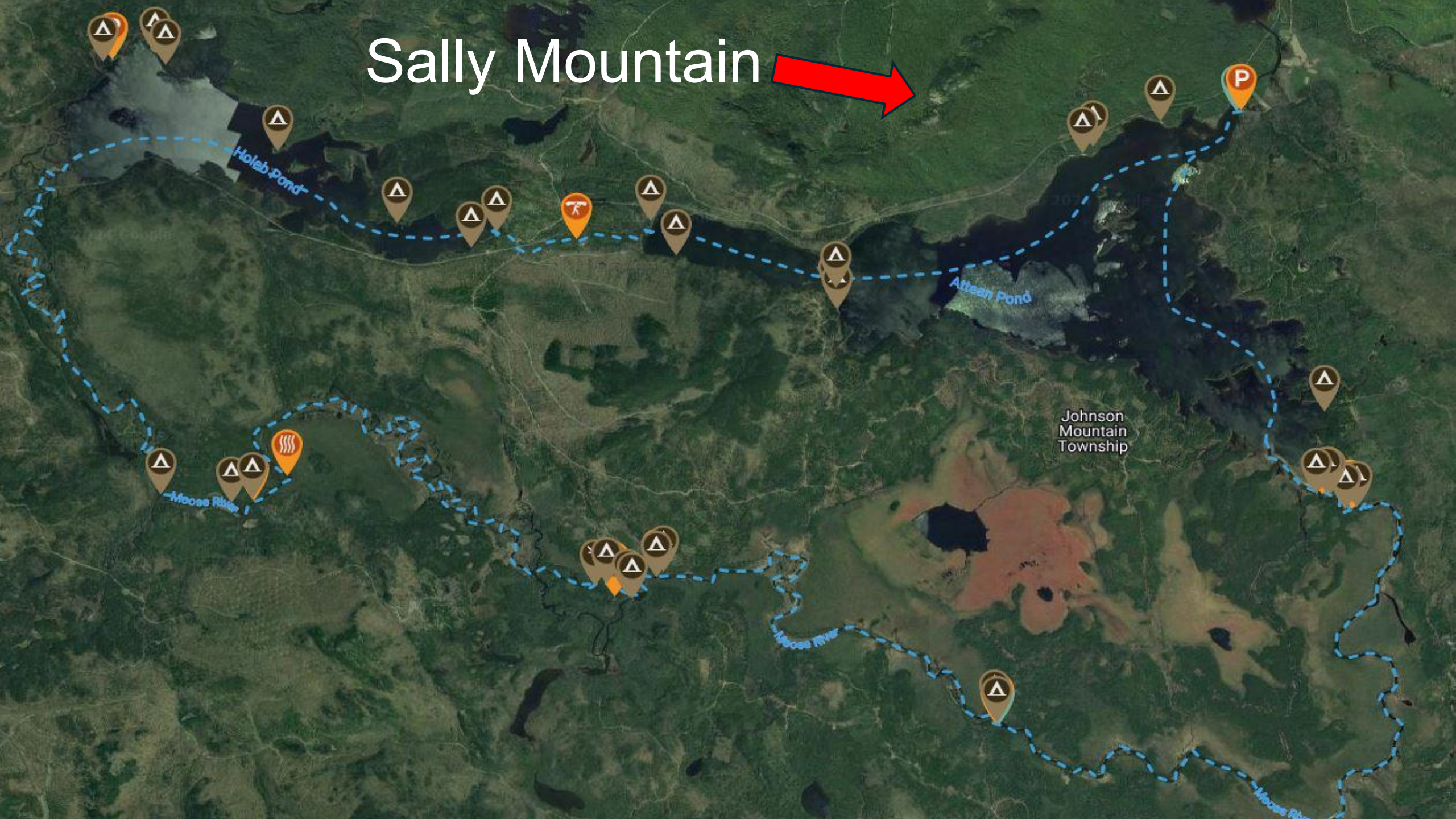








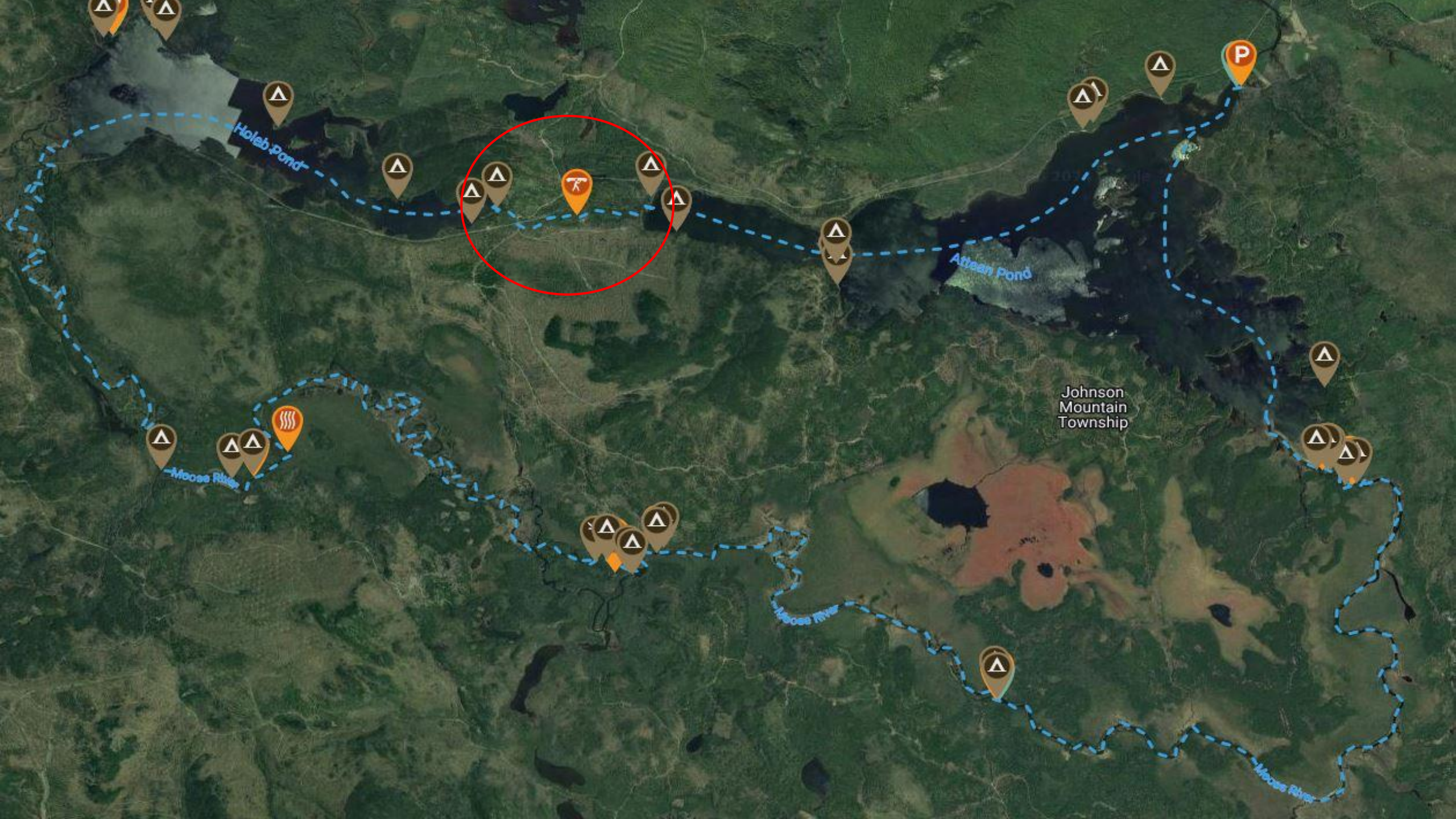
# Sally Mountain











Holeb Pond

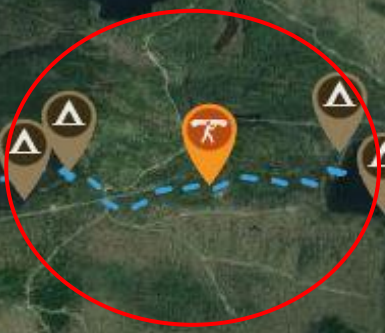
Attean Pond

Moose River

Moose River

Moose River

Johnson  
Mountain  
Township







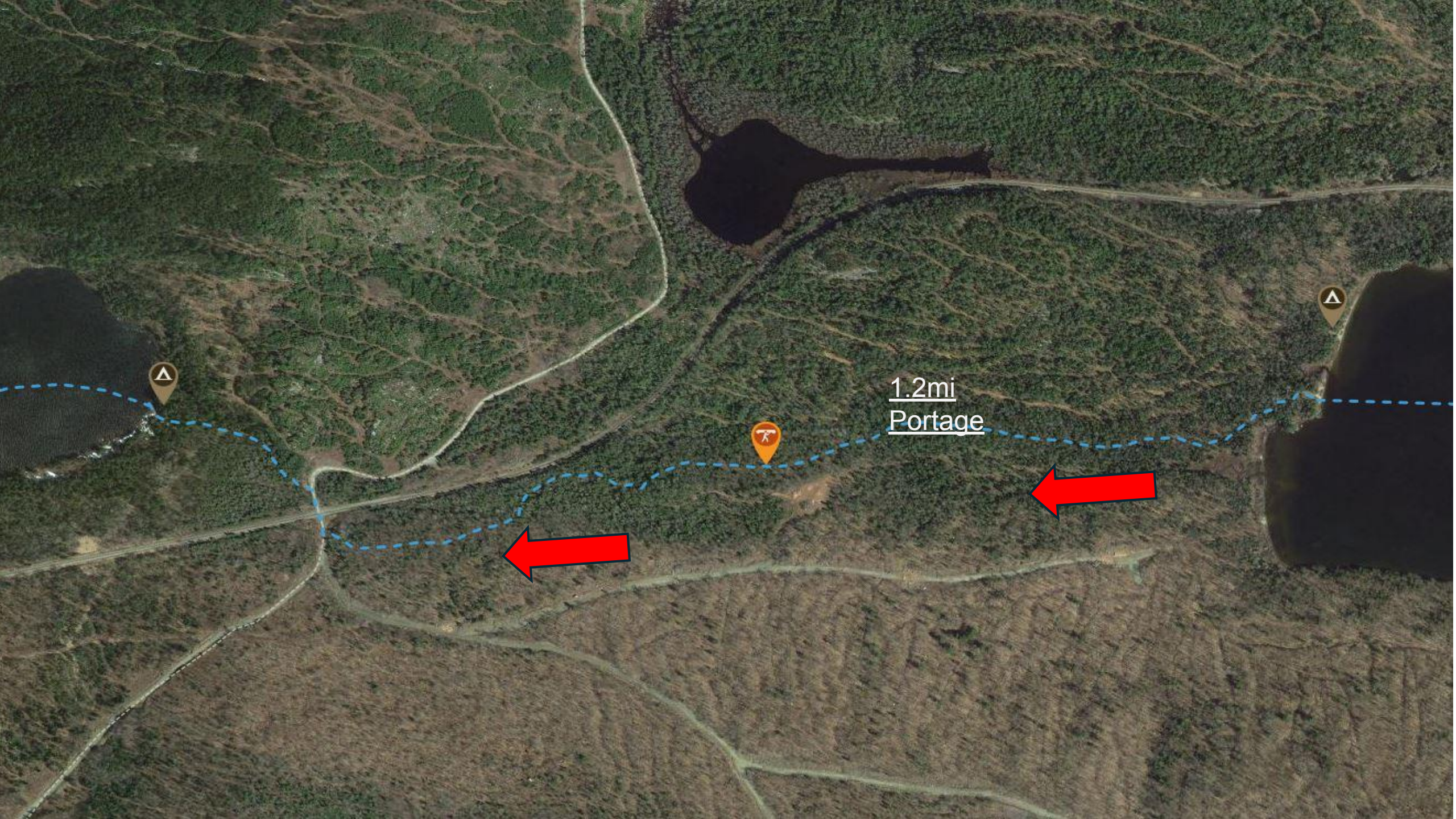








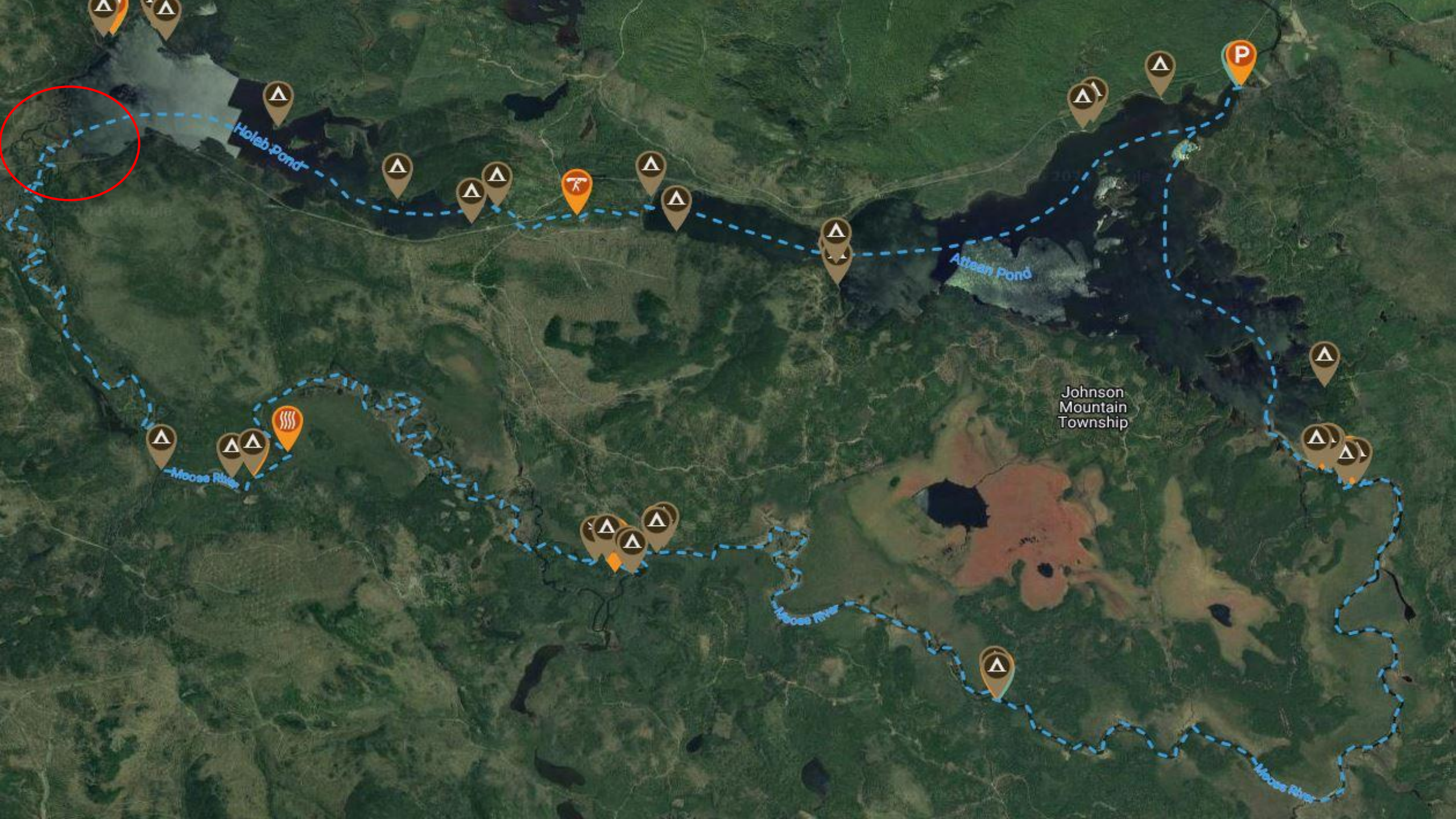




1.2mi  
Portage







Holeb Pond

Attean Pond

Moose River

Moose River

Moose River

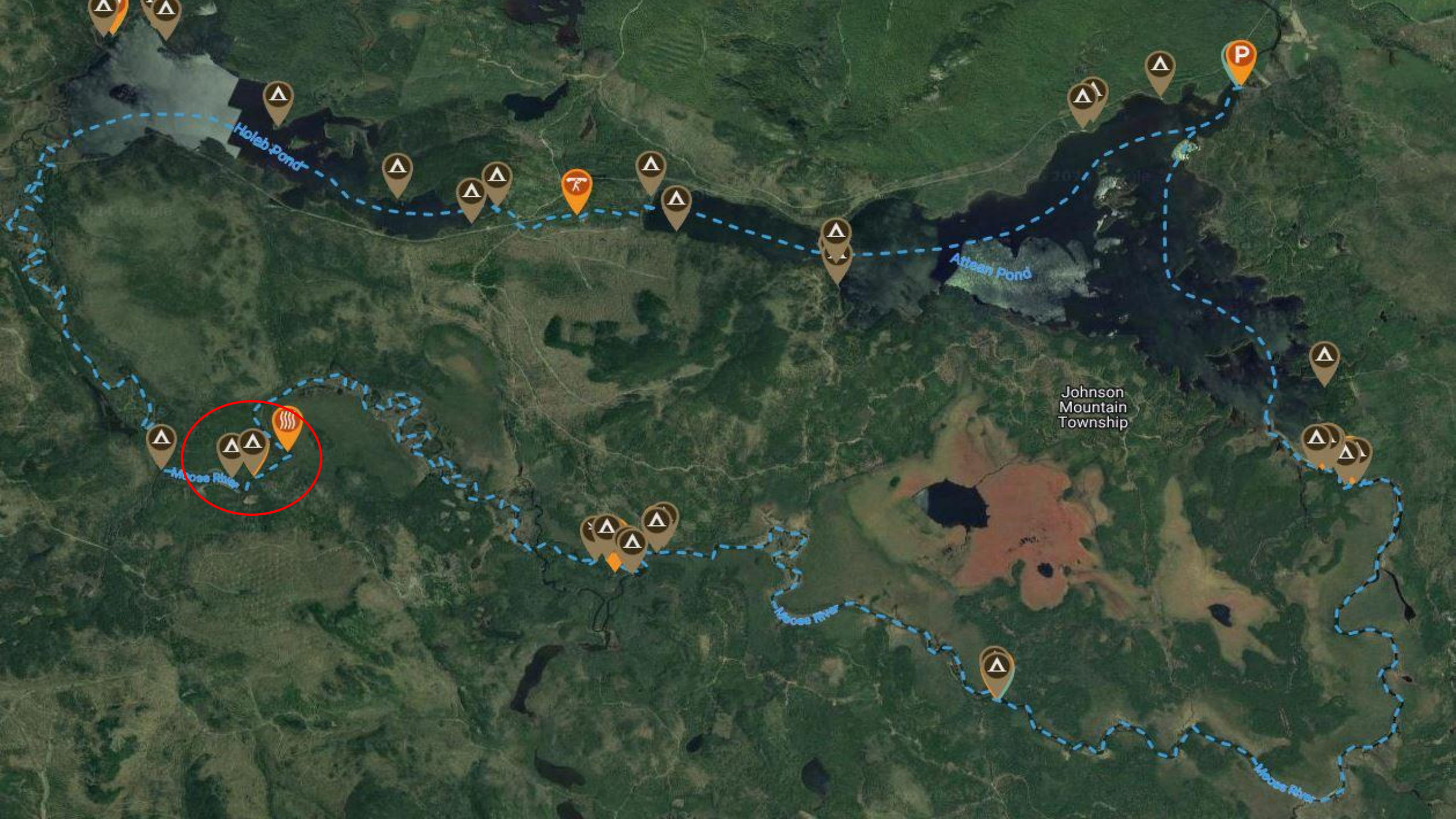
Johnson  
Mountain  
Township











Holeb Pond

Attean Pond

Johnson  
Mountain  
Township

Moses River

Moses River

Moses River





Camel Rips



Barrett Brook

Moose River

Moose River

Camel Rips

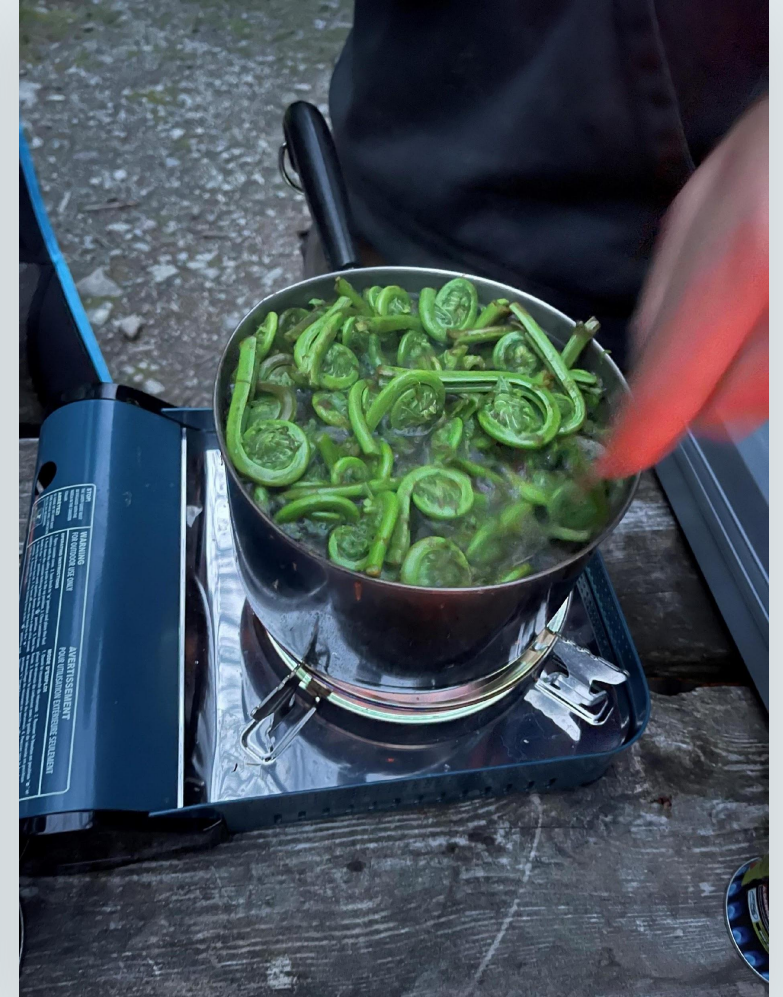
Moose River



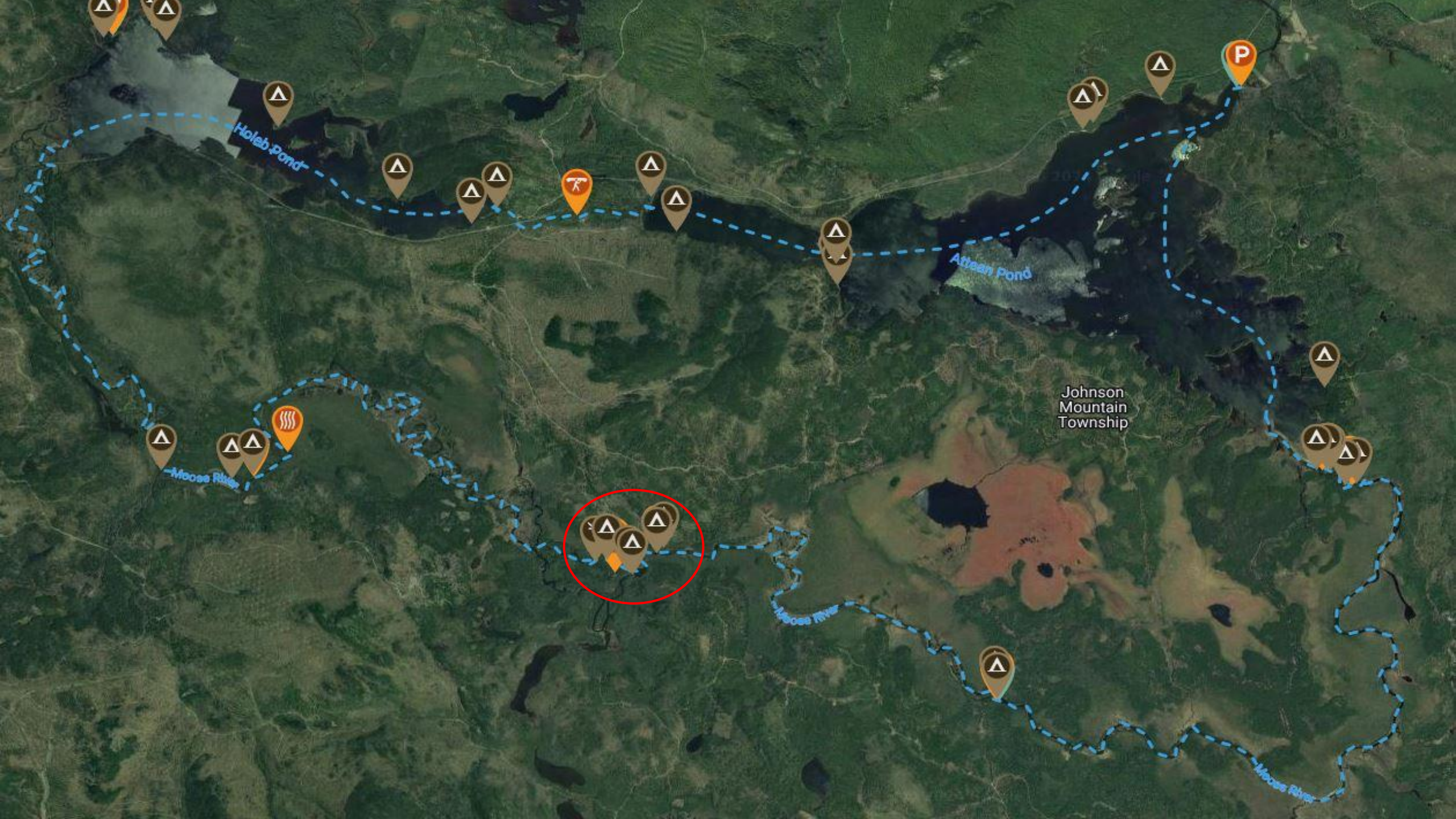




# Eating Good on the River!







Holeb Pond

Attean Pond

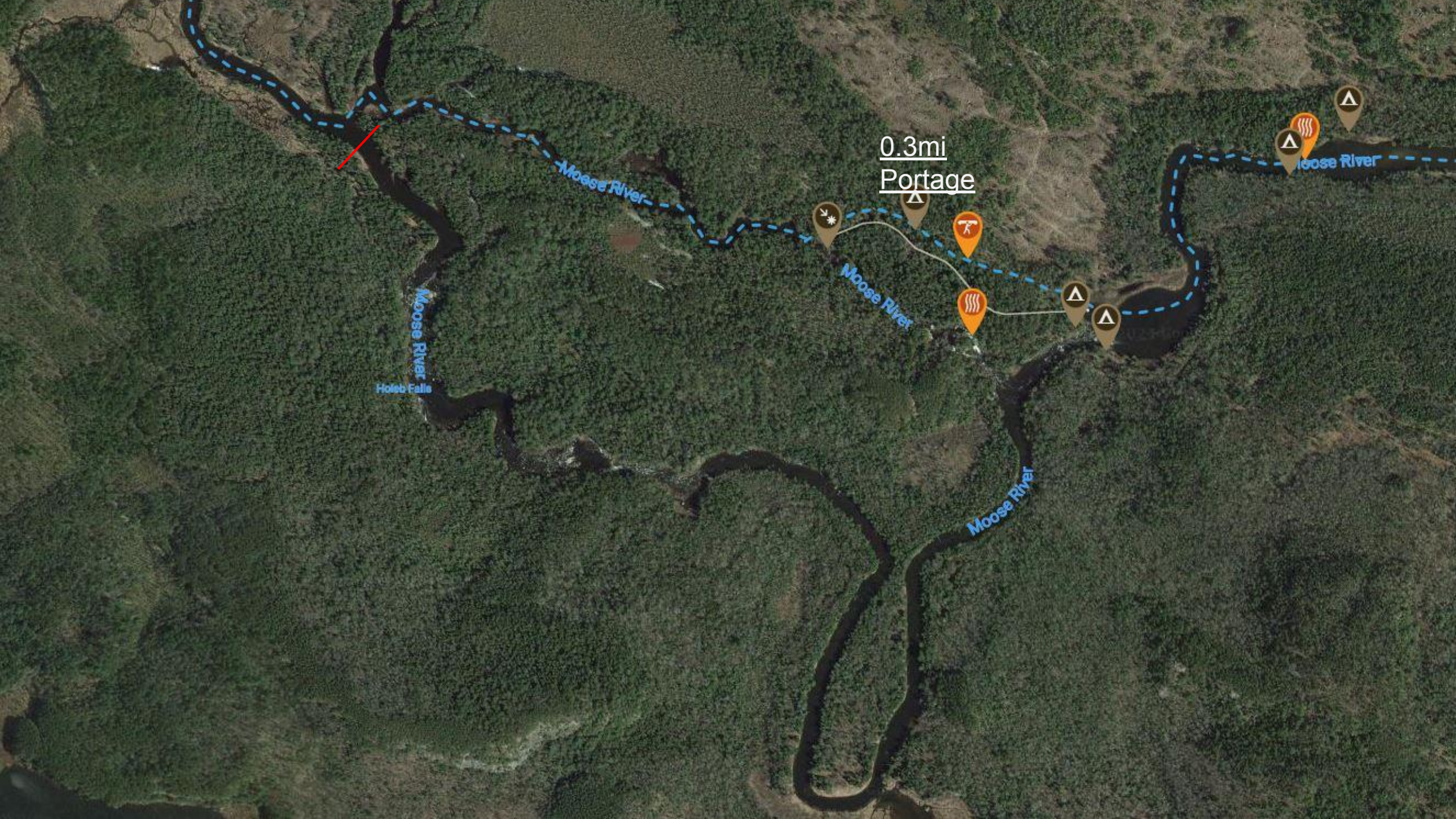
Johnson  
Mountain  
Township

Moose River

Moose River

Moose River





0.3mi  
Portage

Holeb Falls

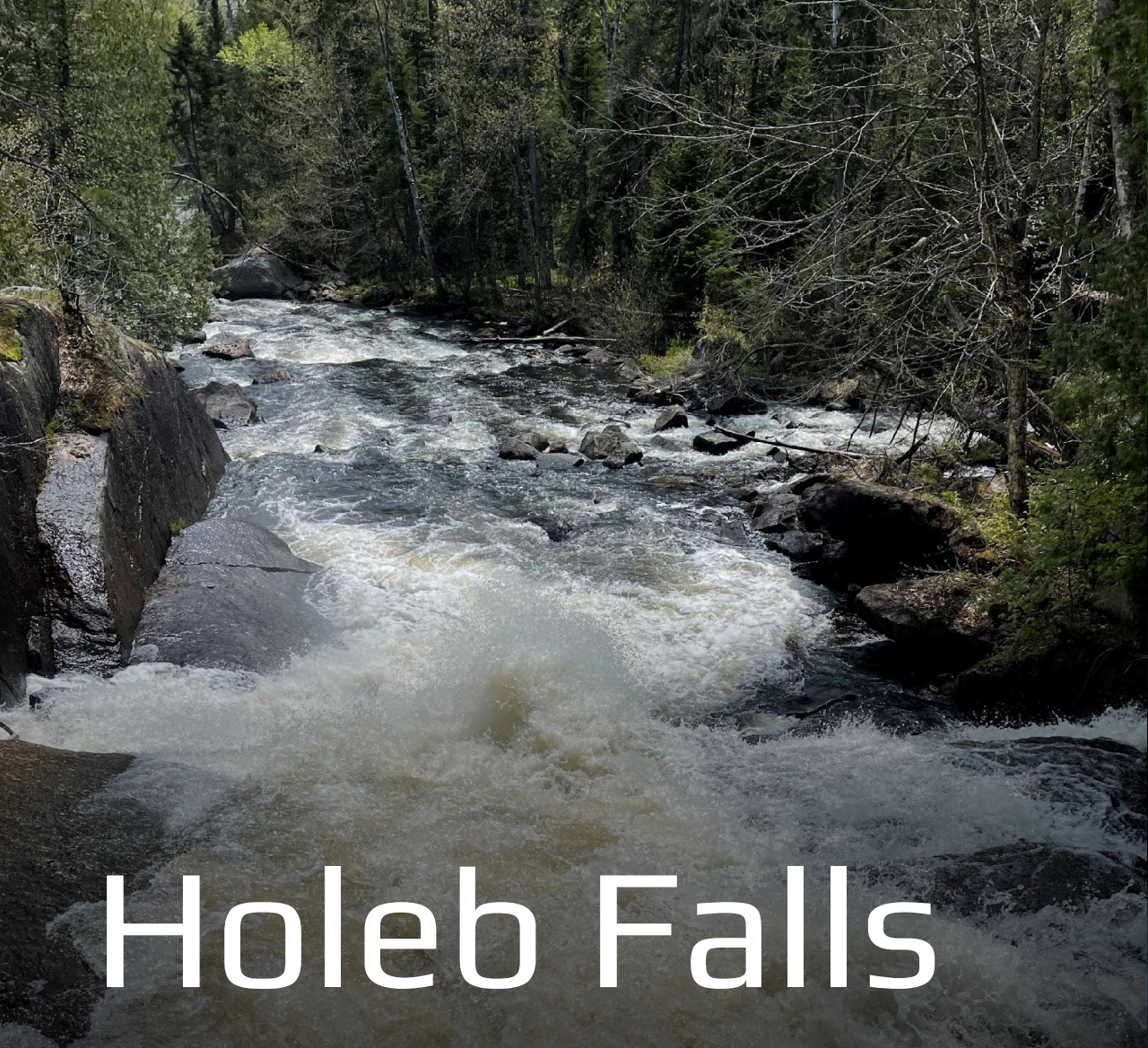
Moose River

Moose River

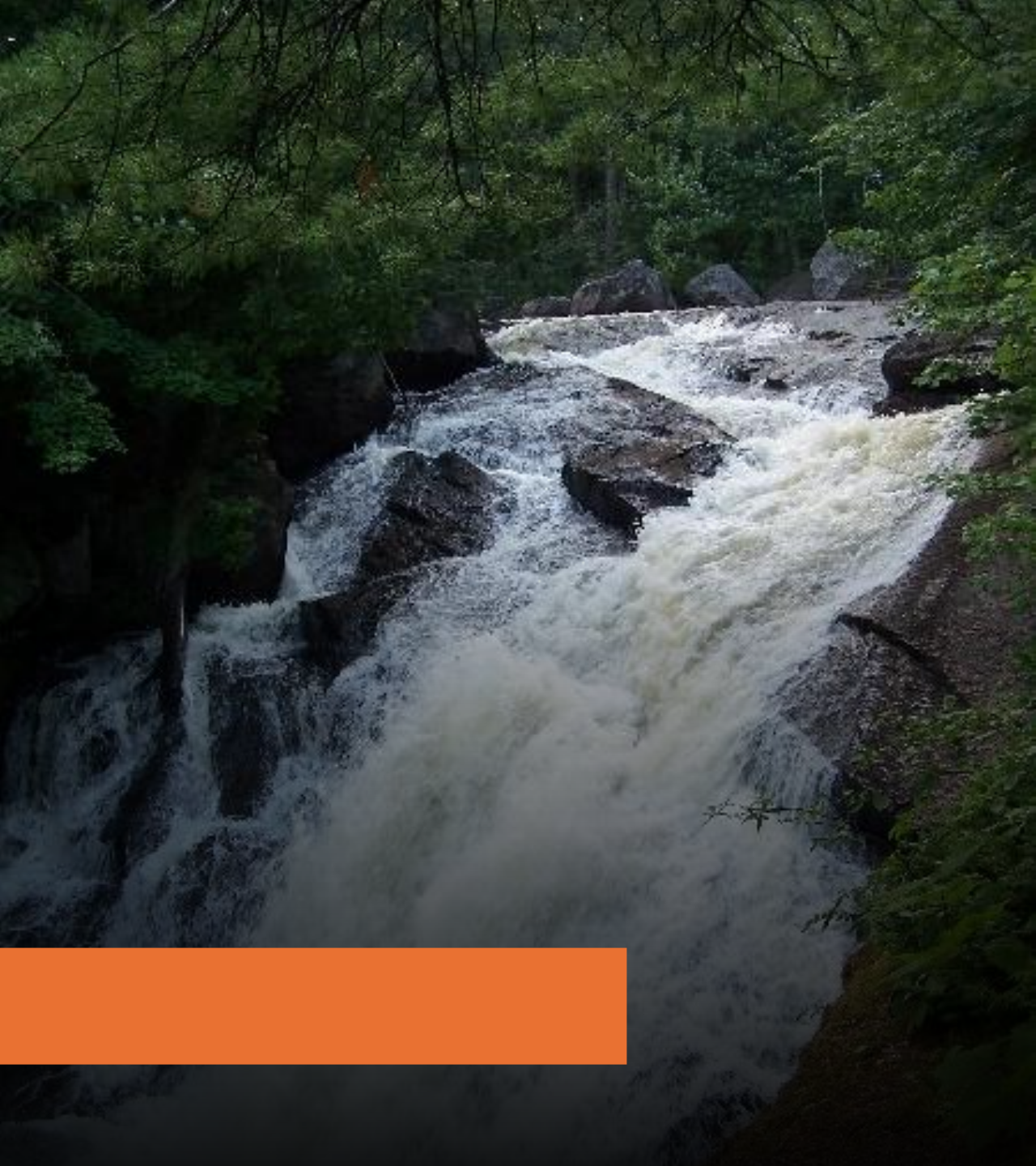
Moose River

Moose River

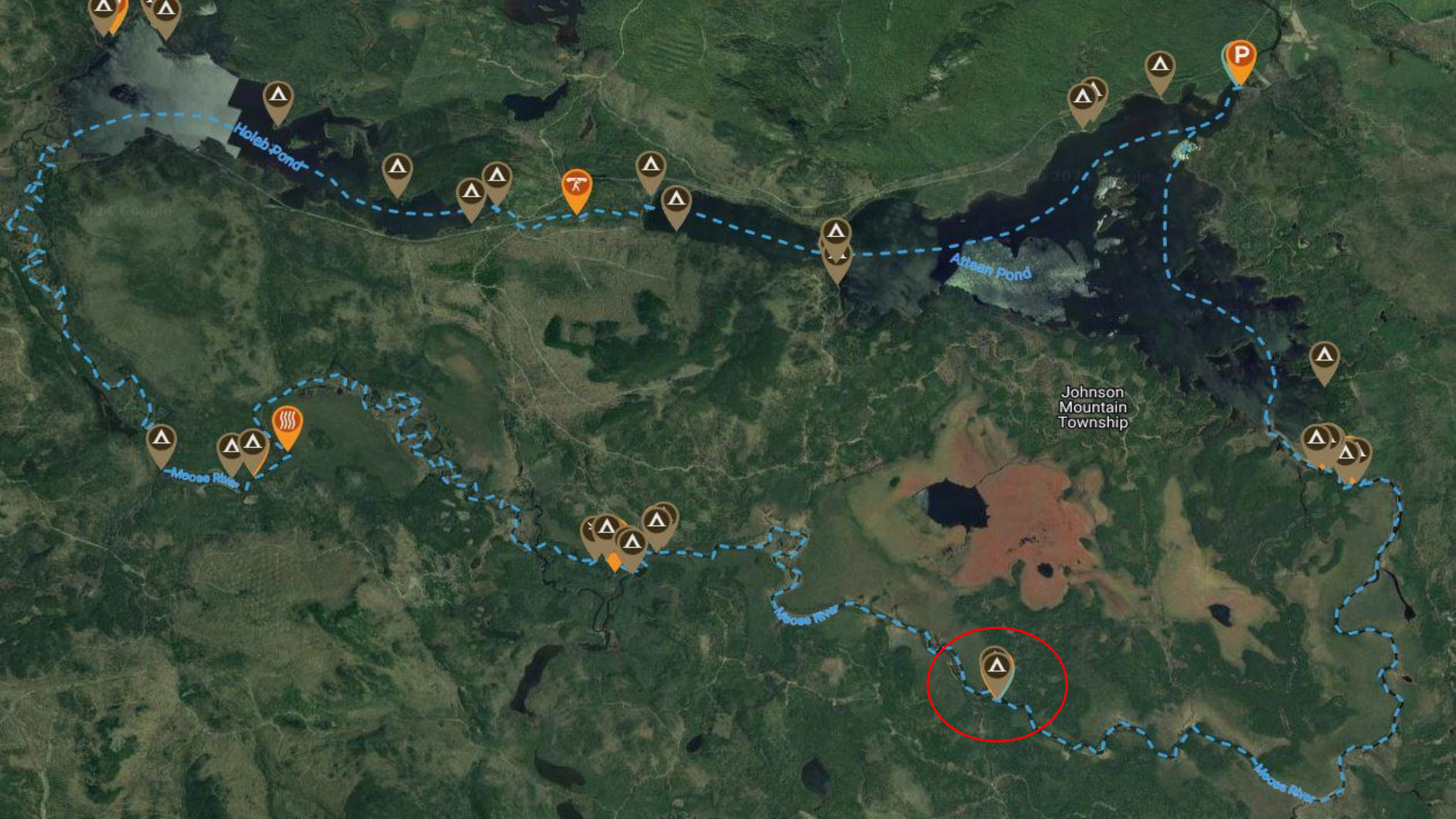




# Holeb Falls







Holeb Pond

Attean Pond

Moose River

Moose River

Moose River

Johnson  
Mountain  
Township







Moose River

Moose River

Spencer Rips

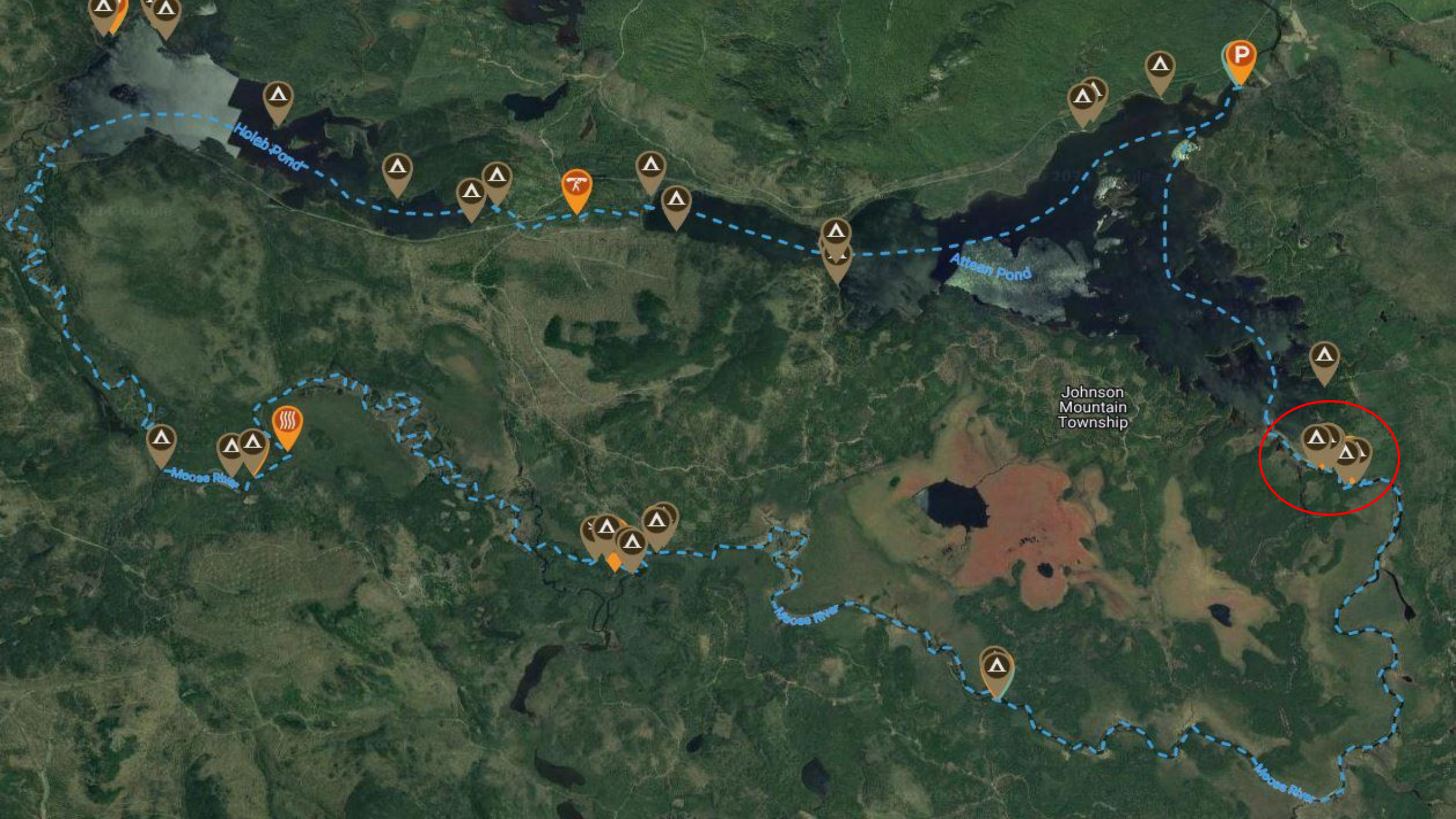
Spencer Rips

NFCT









Holeb Pond

Attean Pond

Moose River

Moose River

Moose River

Johnson  
Mountain  
Township

P

K

Wavy line icon



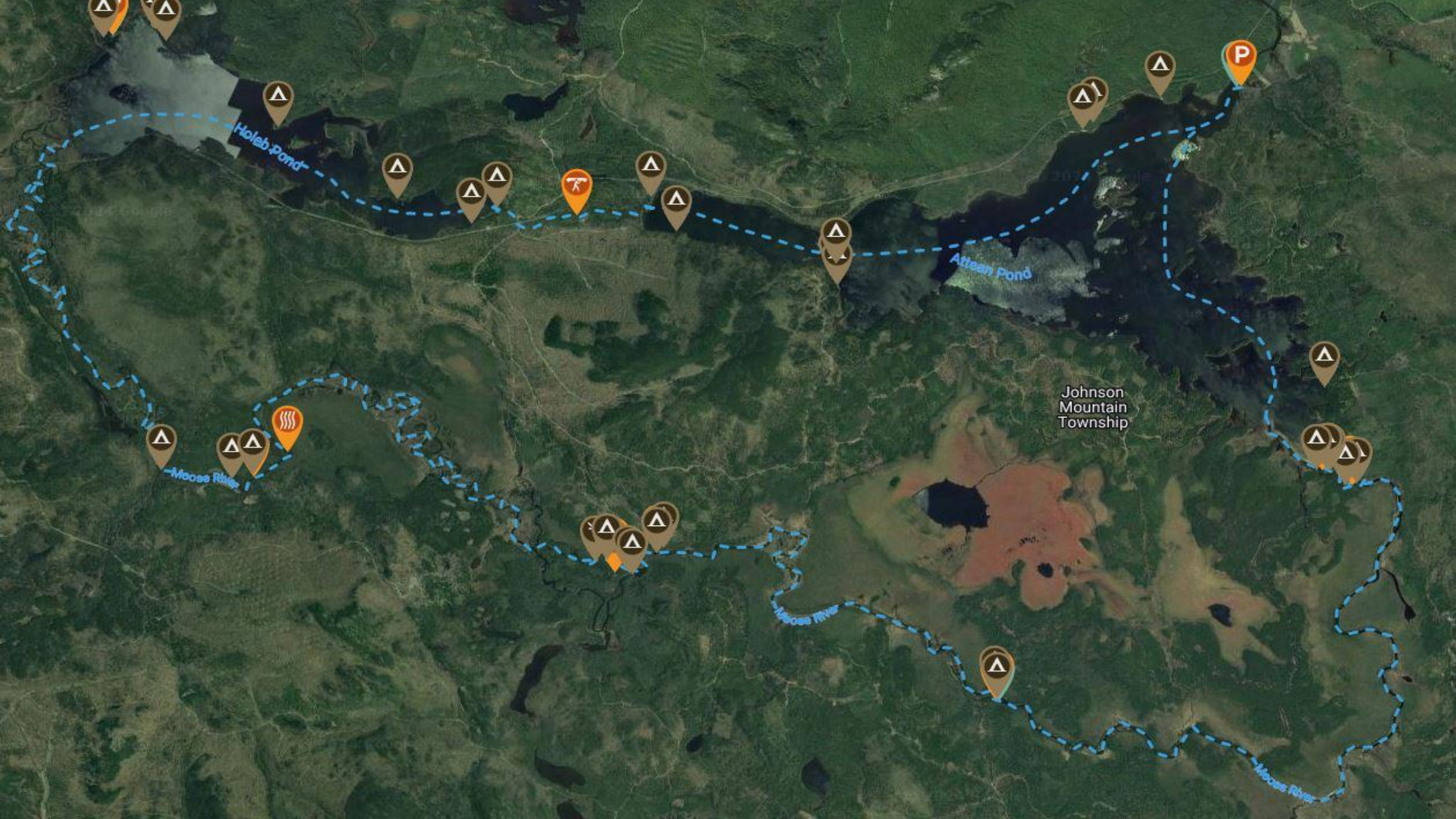


Attean Falls  
(quick drop)

Attean Rips  
(long rapids)







Holeb Pond

Attean Pond

Johnson  
Mountain  
Township

Moose River

Moose River

Moose River



